

*myridas*TM *User Guide*

Version 8.1 for Great Plains 8.0

Catchweights

Trinity Computer Services Limited

June 2005

Contents

CONTENTS	2
USING THIS GUIDE	4
ABOUT MYRIDAS	5
CATCHWEIGHTS.....	6
<i>Catchweights Glossary.....</i>	<i>7</i>
<i>Dual Quantities</i>	<i>7</i>
<i>Lot Tracked Catchweight Items</i>	<i>7</i>
CATCHWEIGHT SETUP AND MAINTENANCE.....	8
1. CATCHWEIGHT SETUP WINDOW	8
1.1 <i>Setting Up Catchweights</i>	<i>8</i>
2. CATCHWEIGHT MAINTENANCE WINDOW	9
2.1 <i>Creating and Editing Catchweights</i>	<i>10</i>
3. ASSIGN CATCHWEIGHT TO ITEM NUMBER WINDOW	12
3.1 <i>Assigning Catchweight Schedules to Individual Items.....</i>	<i>12</i>
4. ASSIGN ITEMS TO CATCHWEIGHTS WINDOW	13
4.1 <i>Assigning Items to Catchweights.....</i>	<i>13</i>
5. CATCHWEIGHT ALLOCATION RANGE WINDOW.....	14
5.1 <i>Assigning a Range of Items to a Catchweight.....</i>	<i>15</i>
CATCHWEIGHT PURCHASING	16
6. PURCHASE ORDER PROCESSING – CATCHWEIGHTS VERSION.....	16
7. PURCHASE ORDER CATCHWEIGHT DETAILS WINDOW	17
7.1 <i>Applying Catchweight Details to Purchase Orders</i>	<i>17</i>
8. RECEIVINGS TRANSACTION PROCESSING – CATCHWEIGHTS VERSION	19
9. RECEIVINGS TRANSACTION CATCHWEIGHT DETAILS WINDOW.....	20
9.1 <i>Applying Catchweight Details to Receivings Transactions</i>	<i>20</i>
9.2 <i>Receiving Lot Controlled Catchweight Items.....</i>	<i>22</i>
10. PURCHASING SERIES POSTING CATCHWEIGHT ERRORS WINDOW	24
10.1 <i>Adding Actual Weight Quantities Prior to Transaction Posting.....</i>	<i>24</i>
CATCHWEIGHT INVENTORY TRANSACTIONS.....	26
11. ITEM TRANSACTIONS PROCESSING - CATCHWEIGHTS VERSION	26
12. TRANSACTION ENTRY CATCHWEIGHT DETAILS WINDOW	27
12.1 <i>Entering Item Transactions for Catchweight Items</i>	<i>27</i>
12.2 <i>Entering Item Transactions for Lot Controlled Catchweight Items.....</i>	<i>29</i>
13. STOCK COUNT ENTRY – CATCHWEIGHTS VERSION.....	31
14. CATCHWEIGHT UNIT OF MEASURE ENTRY WINDOW	32
14.1 <i>Entering Stock Counts for Catchweight Items</i>	<i>32</i>
14.2 <i>Entering Stock Count Lot Number Information for Catchweight Items.....</i>	<i>34</i>
CATCHWEIGHT SALES PROCESSING	36
15. SALES ORDER PROCESSING – CATCHWEIGHTS VERSION.....	36
16. SALES TRANSACTION CATCHWEIGHT DETAILS WINDOW	37
16.1 <i>Applying Catchweight Details to Sales Transactions</i>	<i>37</i>
16.2 <i>Entering Sales Transactions for Lot Controlled Catchweight Items.....</i>	<i>39</i>
17. ACTUAL QUANTITY BREAKDOWN WINDOW	41
17.1 <i>Entering Actual Weight Quantities</i>	<i>41</i>
18. SALES RETURNED CATCHWEIGHT QUANTITIES ENTRY WINDOW	42

18.1 <i>Entering Returns for Catchweight Items</i>	42
19. BASE RETURN ON INVOICE - ITEM SELECTION CATCHWEIGHT DETAILS WINDOW	43
19.1 <i>Entering Catchweight Details for Returns Based on Invoices</i>	43
20. UNCONFIRMED CATCHWEIGHT REPORT.....	45
20.1 <i>Printing Unconfirmed Catchweight Reports</i>	45
CATCHWEIGHT ENQUIRIES AND ALTERNATE WINDOWS.....	47
22. SALES TRANSACTION CATCHWEIGHT ENQUIRY WINDOW	47
22.1 <i>Enquiring about Catchweight Details</i>	47
23. CATCHWEIGHT ENQUIRY WINDOW.....	48
23.1 <i>Enquiring About Catchweight Item Transactions</i>	48
24. CATCHWEIGHT SALES LOT NUMBER ENQUIRY ZOOM WINDOW.....	49
24.1 <i>Enquiring About Catchweight Lot Details on Transactions</i>	49
25. CATCHWEIGHT ITEM ENQUIRY WINDOW.....	50
25.1 <i>Enquiring About Catchweight Items</i>	50
26. CATCHWEIGHT LOT NUMBER ENQUIRY WINDOW.....	51
26.1 <i>Enquiring About Dual Quantity Catchweight Lot Numbers</i>	51
27. ITEM STOCK INQUIRY WINDOW - CATCHWEIGHTS VERSION.....	53
28. TEMPLATE SELLING – CATCHWEIGHTS VERSION	54
29. ORDER HISTORY WINDOW – CATCHWEIGHTS VERSION	55
APPENDIX A.....	56
ACCESS TO MYRIDAS WINDOWS	56
<i>Catchweights</i>	56
APPENDIX B.....	59
ALTERNATE GREAT PLAINS WINDOWS	59
APPENDIX C.....	60
MODIFIED MYRIDAS WINDOWS WITH ADDITIONAL MODULES	60
APPENDIX D.....	61
MYRIDAS REPORTS.....	61
<i>Catchweight Report Functions</i>	61
APPENDIX E.....	63
SUPPORT TOOLS.....	63
<i>Reconciling Dual Quantity Allocations</i>	63
<i>Adjustments</i>	65
<i>Reconcile</i>	66
INDEX	67

Using this Guide

The graphics in this document are best viewed or printed with Adobe Acrobat Reader version 4.0 or above.

This guide provides user notes for the Myridas Catchweights module:

- Catchweights



The mouse symbol has been used throughout the manual to help guide you to the location of windows in the software. See [Appendix A](#) for a list of Myridas windows and their location in the software.

A full range of tutorials is also available on our website, <http://www.trinitypartner.com>.

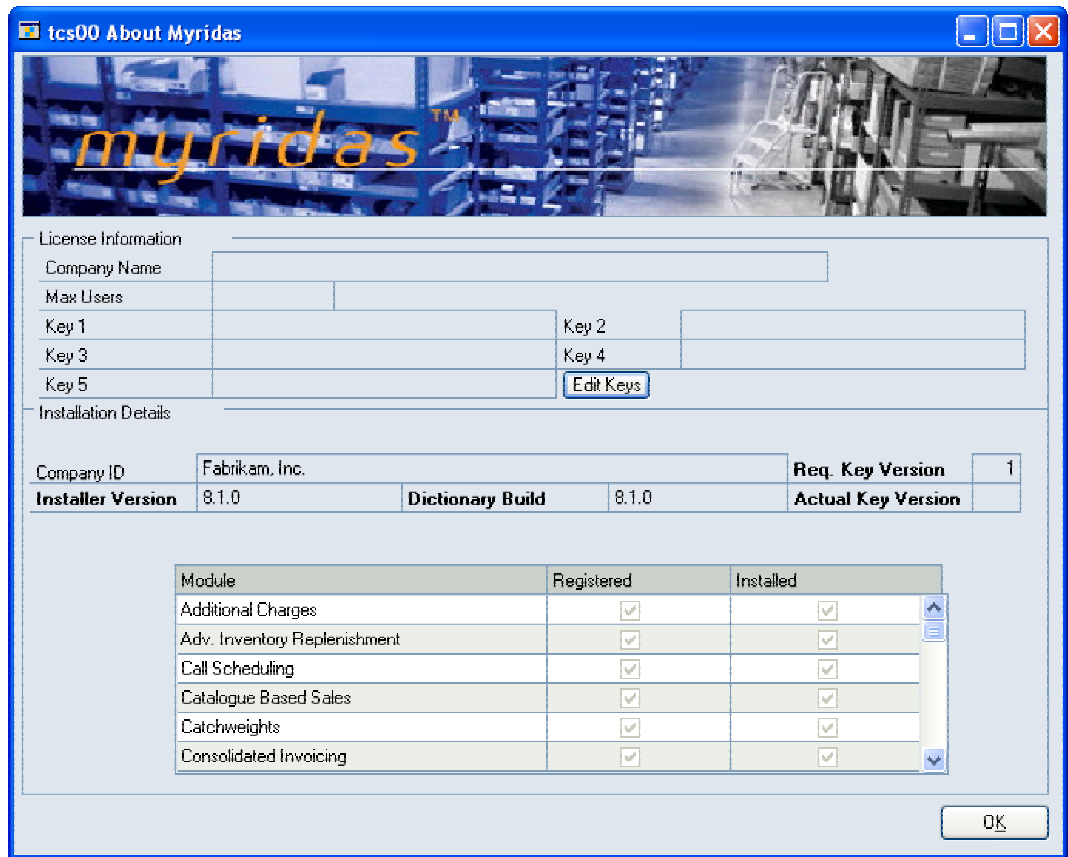
About Myridas



Help >> About Myridas

Use the About Myridas window to check your license information and installation details. The window will tell you which Myridas modules you are registered to use and which have been installed on your system.

The About Myridas window



Catchweights

The Myridas Catchweights module allows additional controls to be applied to numerous standard Great Plains and Myridas windows. Several new windows are also available to implement Catchweight functionality. The focuses of Catchweight functionality are the sales, purchasing and inventory functions.

Catchweights items are items that require quantities to be tracked in more than one unit of measure, where there is no fixed relation between the units of measure. This will usually be the case where the base unit of measure is a weight, with variable units of measure being the units of measure in which the item is bought or sold.

The Myridas Catchweights module allows items to be purchased, inventoried and sold by units that do not have an exact conversion factor to the weight unit of measure used for inventory balances. For example, a company may purchase legs of lamb by the crate, with an average crate weight of 20 kilograms. However, the actual weight of each leg of lamb will vary, and as such so will the actual weight of the crate. The Catchweights module allows the user to correctly and accurately value their stock, by valuing the stock in base unit of measure whilst purchasing and selling in a variable unit of measure.

Use the Myridas Catchweights module to:

- Create and edit variable unit of measure schedules (Catchweight Schedules)
- Assign Catchweight Schedules to specific items or multiple items
- Set up Dual Tracking for a Catchweight Schedule so that items can be tracked through ALL transactions
- Produce Purchase Orders and Receivings transactions based on actual weight quantities, for orders and receipts entered in an estimated weight
- Provide accurate invoicing of actual weight quantities for orders entered in an estimated weight
- Perform stock counts on actual weight quantities

Note that the Catchweights module is not currently compatible with the multi-bin, drop-ship or Manufacturing functionality of Great Plains.

Catchweights Glossary

When setting up Catchweight Unit of Measure Schedules it is important that the user is fully conversant with the relevant terms and definitions. Below is a glossary of key terms.

Base Unit of Measure	The unit of measure in which an item is held on the inventory.
Variable Unit of Measure	A unit of measure defined on a Catchweight Unit of Measure Schedule. An item may be bought and sold in a variable unit of measure. The variable unit of measure estimated equivalence to the estimated base U of M will be used to convert the unit of measure for transactions.
Catchweight Base Unit of Measure	When setting up dual quantity catchweights, you may have multiple catchweight units of measure based on one variable unit of measure. This variable unit of measure is the catchweight base unit of measure.
Actual Weight	The literal weight of each individual item
Estimated Weight	The system held estimate of the standard weight for a type of item – this is calculated using the equivalence estimated between the variable unit of measure and the base unit of measure

Dual Quantities

A Catchweight Schedule may be defined as having Dual Quantities (see the [Catchweight Maintenance window](#)). For this type of schedule there will be two base units of measure; the standard base unit of measure and the catchweight base unit of measure (see above). Further units of measure may be set up but they must be multiples of the catchweight base unit of measure. For example, if you have a catchweight base unit of measure of Whole, then you could set up further units of measure of Box and Case, which would be multiples of the Whole unit of measure. When carrying out sales, purchasing and inventory transactions on dual quantity items, the actual rather than estimated figures can always be viewed.

Lot Tracked Catchweight Items

If an organisation tracks items by lots, the lot-tracked items can be assigned to a Catchweight Schedule. Lots are used to track items with shared characteristics, and may have specified attributes such as a use by date. Lot-tracked catchweight items combine the functionality of catchweights with the control of lot tracking.

Catchweight Setup and Maintenance

1. Catchweight Setup window



Tools >> Setup >> Myridas >> Catchweights >> Catchweight Setup

Use the Catchweight Setup window to:

- Enter system parameters for Catchweights

*The
Catchweight
Setup window*

1.1 Setting Up Catchweights

To set up Catchweights in the Catchweight Setup window:

1. Enter the Catchweight percentage variance that you require. For example, you may set the Catchweight Percentage Variance to be 10%. If an actual weight for an item is ever entered into the system that is greater or lesser than 10% of the estimated weight (the system held standard weight for an item), then a warning will be displayed.
2. Click to select Before or After for SOP Options and POP Options.

The Add Text option in the [Catchweight Maintenance window](#) allows you to incorporate the Catchweight description into the items transaction description. This gives you greater visibility of item details when performing transactions.

If you select to Add Text in the Catchweight Maintenance window then selecting to Add Unit of Measure Description Before or After will decide whether the Catchweight details are displayed before or after an item on a transaction line.

3. Selecting the Order By Weight option will give functionality to enter catchweight details for sales order by entering a specific weight quantity.

Note that this will apply to sales order type documents only (See [the Sales Transaction Catchweight Details window](#) for further details).

4. Selecting the Allow Auto-Allocation of Lots option will enable catchweights to attempt to automatically allocate lots during sales transaction entry.
5. Click OK to save your system parameter settings.

2. Catchweight Maintenance window



Cards >> Myridas >> Catchweights >> Catchweight Maintenance

Use the Catchweight Maintenance window to:

- Create and edit Catchweight Unit of Measure Schedules

The Catchweight Maintenance window

U Of M	Estimated KILO	SOP		POP		Info
		Confirm	Add Text	Confirm	Add Text	
KILO	1.00	<input checked="" type="checkbox"/>	<input type="checkbox"/>	<input checked="" type="checkbox"/>	<input type="checkbox"/>	
WHOLE	0.50	<input checked="" type="checkbox"/>	<input checked="" type="checkbox"/>	<input checked="" type="checkbox"/>	<input checked="" type="checkbox"/>	<input checked="" type="checkbox"/>
	0.00	<input type="checkbox"/>	<input type="checkbox"/>	<input type="checkbox"/>	<input type="checkbox"/>	

2.1 Creating and Editing Catchweights

To create and edit catchweights in the Catchweight Maintenance window:

1. Enter a Catchweight Unit of Measure Schedule or select one using the lookup.
2. If creating a new Catchweight enter the required description into the Description field.
3. If you want to set up a Dual Quantities Catchweight Schedule click to select Dual Quantities.

Selecting this option will give you the facility to track items in two Base Units of Measure throughout their life cycle (one of these will be the Catchweight Base Unit of Measure - see the [Catchweights Glossary](#)). Any further Units of Measure set up must be multiples of the Catchweight Base Unit of Measure. For example, if you have a Catchweight Base Unit of Measure of Whole, then you could set up further Units of Measure of Box and Case, which would be multiples of the Whole Unit of Measure. Increased functionality is given, for example, in inventory transactions to provide superior item tracking with actual, rather than estimated, quantities.

4. Select the required Quantity Decimals (the number of decimal places to which the Catchweight will run), and the Base Unit of Measure. The Selected Base U of M will automatically be displayed in the U of M scrolling window with a value of 1.

Note that the Base U of M will be displayed after Estimated above the scrolling window. This will be the base equivalent for all subsequent variable units of measure that are created for the Catchweight (excepting Dual Quantity Catchweights).

Note also that to assign an item to a Catchweight Unit of Measure schedule they must share the same Base Unit of Measure and Quantity Decimals.

5. In the U of M scrolling window enter each required Unit of Measure and their Estimated quantity value to the Base Unit of Measure.

For example, you may order Lobster by the kilogram, and wish to have both a kilogram Unit of Measure and a whole Lobster Unit of Measure. You would first enter Kilo, with an Estimated weight value of 1. You would then enter Whole with the required Estimated weight value, for example 0.5. This is the number of Kilo's that the average whole Lobster would be equivalent to.



Note that if you are entering Units of Measure for a Dual Quantity Catchweight then equivalences will be relative to the Catchweight Base Unit of Measure (see above), which is denoted by a marked Information field.

6. For each line Unit of Measure entered you must click to Confirm or Add Text to both Sales Order Processing and Purchase Order Processing.

Clicking to Add Text will display the Catchweight details on the transaction line. Clicking Confirm will require you to enter an actual weight against a transaction line before the items on the document can be confirmed as picked.

Note that for Dual Quantity Catchweight Schedules you are required to select Confirm for the non-Base Unit of Measure.

7. For Main Selling Unit select the default Unit of Measure that you require items to be sold in.
8. For Main Purchasing Unit select the default Unit of Measure that you require items to be purchased in.
9. From the CW Quantity Decimals drop-down menu select the number of decimal places that can be entered against catchweight quantities in transactions. This will be applicable for all transaction types.
10. Click Save to save any changes you have made to the Catchweight.

You may click Sort to display your entered details by Unit of Measure or by Equivalence.

Click the Assign button to display the [Assign Items to Catchweights window](#) where you can assign items to a Catchweight Unit of Measure Schedule.

You can copy details of one Catchweight onto a new Catchweight. To do this enter a new Catchweight and description then click Copy to display the Catchweight Unit of Measure Schedules window. Select a Catchweight to copy. Note that the number of decimal places on the schedule being copied must be less than or equal to those on the schedule being created. A warning will be displayed if this is not the case with your selections. You may edit the number of decimal places in your new schedule to fit these parameters.

Deleting Catchweights

Click Delete to delete the Catchweight Schedule. Note that you cannot delete a Catchweight Schedule that is assigned to items.

3. Assign Catchweight to Item Number window



Cards >> Myridas >> Catchweights >> Assign Catchweight to Item Number

Use the Assign Catchweight to Item Number window to:

- Assign individual items to a Catchweight Schedule

*The Assign
Catchweight to
Item Number
window*

Note that this window is also available as an Extras option from the Great Plains Item Maintenance window.

Note that you can re-assign items to an alternative Catchweight Schedule. If you are assigning an item from a non-Dual Quantity to a Dual Quantity Catchweight Schedule it is recommended that you first run a stock count as all catchweight quantities will be set to zero.

3.1 Assigning Catchweight Schedules to Individual Items

To assign a Catchweight Schedule to an item in the Assign Catchweight to Item Number window:

1. Enter the required Item Number or click the lookup button to select an Item Number from the Items window.
2. Enter the required Catchweight Schedule or click the lookup button to select a Catchweight Schedule from the Catchweight Unit of Measure Schedules window.
3. Click Save to assign the selected item to the Catchweight Schedule.

*Deleting items
from a
Catchweight*

Click Delete to unassign an item from a Catchweight Schedule.

Note that you can choose to clear your selection at any point by clicking the Clear button.

4. Assign Items To Catchweights window



Cards >> Myridas >> Catchweights >> Assign Items to Catchweights

Use the Assign Items to Catchweights window to:

- Assign items to a Catchweight Unit of Measure Schedule

*The Assign
Items to
Catchweights
window*

Item Number	Description
Generic Description	Class Code
LOBSTER	Red Lobster
CRAB	White Crab

This window can also be displayed from the [Catchweight Maintenance window](#).

Note that you can re-assign items to an alternative Catchweight Schedule. If you are assigning an item from a non Dual Quantity to a Dual Quantity Catchweight Schedule it is recommended that you first run a stock count as all catchweight quantities will be set to zero.

4.1 Assigning Items to Catchweights

To assign items to Catchweights Schedules in the Assign Items to Catchweights window:

1. Enter the required Catchweight Schedule or click the lookup to select a Catchweight Schedule from the Catchweight Unit of Measure Schedules window.
2. In the Item Number scrolling window enter the items that you want to assign to a Catchweight Schedule, or click the lookup to select items from the Items window.

3. Click Save to assign your selected Item Numbers to the Catchweight Schedule.

Note that you can click the Ranges button to open the Catchweight Allocation Range window where you can assign a range of items to a Catchweight Schedule.

Deleting Items from a Catchweight

Click Delete to unassign items from a Catchweight Schedule.

Note that you may click the Sort button to alter the displayed sequence of your selected items in the scrolling window.

5. Catchweight Allocation Range window



Assign Items To Catchweights window >> Ranges button

Use the Catchweight Allocation Range window to:

- Assign a range of items to a Catchweight Schedule

The Catchweight Allocation Range window

Item Number	Generic Desc	Class ID	Catchweight Schedule	Description
CRAB			Shellfish	White Crab
LOBSTER			Shellfish	Red Lobster

Note that you can re-assign items to an alternative Catchweight Schedule. If you are assigning an item from a non Dual Quantity to a Dual Quantity Catchweight Schedule it is recommended that you first run a stock count as all catchweight quantities will be set to zero.

5.1 Assigning a Range of Items to a Catchweight

To assign a range of items to a Catchweight Schedule in the Catchweight Allocation Range window:

The Catchweight Allocation Ranges window will open with details of the current Catchweight Schedule selection. You can click the lookup button to select an alternative Catchweight Schedule from the Catchweight Unit of Measure Schedules window.

Item ranges are assigned by item number, generic description and Class ID.

1. Click All to assign all records or From to assign a selection of records for Item Number, Generic Description and Class ID. If you select From, enter To and From values to specify a range, or use the lookups.

2. To specify items to be added to the Catchweight Schedule:

- 2.1. Select the Unassigned check box to add unassigned items only to the Catchweight Schedule.

Note that items previously assigned to different Catchweight Schedules will not be reassigned to the new Catchweight Schedule.

- 2.2. Select the Any check box to add items previously assigned to any Catchweight Schedule, or unassigned items, to the new Catchweight Schedule.

- 2.3. Select the Specified check box to add items previously assigned to a specified Catchweight Schedule. Enter the required Catchweight Schedule or click the lookup to select a Catchweight Schedule from the Catchweight Unit of Measure Schedules window.

3. Click the Preview button to verify your selection in the scrolling window. The item number and item description of each item to be assigned will be listed. Click the Show button to display the generic description, class ID, current Status Code and Status Code description (where relevant).
4. Click the Transfer button to assign your item selection to the Catchweight Schedule. Click OK to close the Transfer Completed Successfully dialog box.
5. Click OK to return to the Assign Items to Catchweights window.



Catchweight Purchasing

6. Purchase Order Processing – Catchweights Version



Transactions >> Purchasing >> Purchase Order Entry

Use the Purchase Order Entry window to:

- Enter or edit a Purchase Order

The Purchase Order Entry window

The screenshot shows the 'Purchase Order Entry' window with the following details:

- Type:** Standard (dropdown), Hold
- PO Number:** PO2079
- Buyer ID:** (empty)
- Date:** 12/04/2007
- Allow Sales Documents Commitments:**
- Creditor ID:** DDLECKIC0001
- Name:** Dolecki Catering
- Currency ID:** Z-US\$

Line	Creditor Item	U of M	Quantity Ordered	Unit Cost
1	LOBSTER	KILO	5.00	\$4.00
	(10&A/HOLE) Red Lobster	WAREHOUSE	0.00	\$20.00
0			0.00	\$0.00
			0.00	\$0.00

Summary:

- Remaining PO Subtotal: \$20.00
- Subtotal: \$20.00
- Trade Discount: \$0.00
- Freight: \$0.00
- Miscellaneous: \$0.00
- Tax: \$0.00
- Total: \$20.00

Company Tax Sched: COMPANYPUR

Comment ID: (empty)

PO Number: (dropdown), PO Status: New, Revision: 0

The Purchase Order Entry window is given added functionality by the Myridas Catchweights module. Entering an item with a Catchweight Unit of Measure Schedule will display the [Purchase Order Catchweight Details window](#).

7. Purchase Order Catchweight Details window



Transactions >> Purchasing >> Purchase Order Entry

Use the Purchasing Order Catchweight Details window to:

- Enter Catchweight quantities, units and actual weight

*The
Purchase
Order
Catchweight
Details
window*

Creditor Item	Catchweight Schedule	CW U of M	Catchweight Qty
Creditor Description	U of M	Estimated KILO	Actual KILO
LOBSTER	SHELLFISH	WHOLE	10
Red Lobster	KILO	5.00	5.00

This window will also be displayed if you enter purchase lines individually through the Purchasing Item Detail Entry window.

7.1 Applying Catchweight Details to Purchase Orders

To apply Catchweights to purchase orders in the Purchase Order Catchweight Details window:

The transaction should initially be entered following standard Great Plains procedure.

1. Click into the quantity field in the Purchase Order Entry scrolling window to open the Purchase Order Catchweight Details window.
2. The Main Purchasing Unit from the Catchweight Unit of Measure Schedule will be displayed in the CW U of M field. Select an alternate unit of measure from the drop-down menu as required.

Note that you cannot select an alternate unit of measure if you are working with a dual quantity catchweight.

3. Enter the Catchweight Quantity. This is the quantity of the item to be purchased, measured in the displayed Catchweight U of M.

The Estimated weight quantity will be amended relative to your selected Catchweight Unit of Measure.

For example, the item Lobster may have a Base Unit of Measure of Kilo, and a selected Catchweight Unit of Measure of Whole, with 1 Whole Lobster equalling 0.5 kilos. If you enter 10 into the Catchweight Quantity scrolling window then the Estimated Kilo displayed will be 5.



Note that the Base U of M quantity, for example kilo, will be displayed in the Purchase Order Entry scrolling window. If you have set the Catchweight (in the Catchweight Maintenance window) to Add Text then you can click the Show button to display, for example, the number of whole Lobsters the quantity entered is equivalent to.

4. If you do not enter an Actual Quantity then the Estimated Quantity will be used instead. You can select to enter an Actual Quantity in the Base Unit of Measure, though in purchasing transactions you will usually accept the defaulted Estimated Quantity.
5. Click OK to confirm the details and return to the Purchase Order Entry window.

8. Receiving Transaction Processing – Catchweights Version



Transactions >> Purchasing >> Receiving Transaction Entry

Use the Receiving Transaction Entry window to:

- Enter or edit a Receiving Transactions

The Receiving Transaction Entry window

PD Number	U of M	Site ID	Creditor Item	Quantity Ordered	Quantity Invoiced	Extended Cost	Previously Shipped	Previously Invoiced
PD2079			LOBSTER		5.00	\$4.00	5.00	0.00
	KILO	WAREHOUSE	(10xWHOLE) Fried Lobster	5.00	0.00	\$20.00	0.00	9.95
PD2079				0	0	\$0.00	0	0
		WAREHOUSE		0	0	\$0.00	0	0

TOTAL Amount	\$0.00	Subtotal	\$20.00
Payment Terms		Trade Discount	\$0.00
Landed Cost Func. Total	\$0.00	Freight	\$0.00
		Miscellaneous	\$0.00
		Tax	\$0.00
		Total	\$20.00

The Receiving Transaction Entry window is given added functionality by the Myridas Catchweights module. Entering an item with a Catchweight Unit of Measure Schedule will display the [Receiving Transaction Catchweight Details window](#).

Note that you can also auto-receive purchase orders containing catchweight items following standard Great Plains auto-receiving procedures.

9. Receiving Transaction Catchweight Details window



Transactions >> Purchasing >> Receiving Transaction Entry

Use the Receiving Transaction Catchweight Details window to:

- Enter Catchweight quantities, units and actual weight

*The
Receiving
Transaction
Catchweight
Details
window*

Creditor Item	Catchweight Schedule	CW U of M	Catchweight Qty
Creditor Description	U of M	Estimated KILO	Actual KILO
LOBSTER	SHELLFISH	WHOLE	10
Red Lobster	KILO	5.00	4.95

This window will also be displayed if you enter receiving lines individually through the Receiving Item Detail Entry window.

9.1 Applying Catchweight Details to Receiving Transactions

To apply Catchweights to receiving transactions in the Receiving Transaction Catchweight Details window:

The transaction should initially be entered following standard Great Plains procedure.

1. Click into the quantity field in the Receiving Transaction Entry scrolling window to display the Receiving Transaction Catchweight Details window.
2. The Main Purchasing Unit from the Catchweight Unit of Measure Schedule will be displayed in the CW U of M scrolling window. Select an alternate unit of measure from the drop-down menu as required.

Note that you cannot select an alternate unit of measure if you are working with a dual quantity catchweight.

3. Enter the Catchweight Quantity. This is the quantity of the item to be received, measured in the displayed Catchweight U of M.

The Estimated weight quantity will be amended relative to your selected Catchweight Unit of Measure.

For example, the item Lobster may have a Base Unit of Measure of Kilo, and a selected Catchweight Unit of Measure of Whole, with 1 Whole Lobster equalling 0.5 kilos. If you enter 10 into the Catchweight Quantity scrolling window then the Estimated Kilo displayed will be 5.



Note that the Base U of M quantity, for example kilo, will be displayed in the Receiving Transaction Entry scrolling window. If you have set the Catchweight (in the [Catchweight Maintenance window](#)) to Add Text then you can click the Show button to display, for example, the number of whole Lobsters the quantity entered is equivalent to.

4. Enter the Actual Quantity in Base Unit of Measure for the Item Number. The Actual Quantity is used to confirm the weight of the transaction line and is based on the Base U of M.

Note that the Actual Quantity may be entered at a later date, for example, after the received items have been weighed. If you do not enter the Actual Quantity now a warning will be displayed that the Actual Quantity needs setting before the transaction can be posted. A warning will also be displayed if you attempt to Save the transaction in the Receiving Transaction Entry window.

In both instances you may proceed without entering the Actual Quantity, but will be unable to Post a transaction until the Actual Quantity has been set.

Note that if you have not selected the Confirm POP option in the Catchweight Maintenance window then you need not enter an Actual Quantity. The Estimated Quantity will be used instead.

Also note that the Actual Quantity should be within the percentage variance (the difference between the Estimated and Actual Quantity) set in the Catchweight Setup window. If you enter an Actual Quantity greater than the percentage variance then you will receive a warning. Click OK to continue with the transaction.



5. Click OK to confirm the details and return to the Receiving Transaction Entry window. Proceed as per standard Great Plains procedure.

If required you can select an alternate catchweight unit of measure from the CW U of M drop-down menu.

4. Click Insert.
5. If you are assigning the received items to more than one lot number, then continue entering lot numbers for the item (steps 2 to 4). The Total Quantity Selected must equal the item's extended quantity before you can move to the next line item in the Receiving Transaction Entry window or the Receiving Item Detail Entry window.
6. Click OK to confirm the details and return to the Receiving Transaction Entry window.

10. Purchasing Series Posting Catchweight Errors window



Transactions >> Purchasing >> Series Post >> Click on a Batch ID where Actual Quantities have not been entered for one or more items in a transaction

Use the Purchasing Series Posting Catchweight Errors window to:

- Identify and amend receivings transactions requiring the addition of Actual Quantities

*The
Purchasing
Series
Posting
Catchweight
Errors
window*

Receipt Number	Type	Vendor Doc. No
RCT1165	Shipment	

10.1 Adding Actual Weight Quantities Prior to Transaction Posting

To identify and amend receivings transactions requiring the addition of Actual Quantities in the Purchasing Series Posting Catchweight Errors window:

1. If you click on a Batch ID in the Great Plains Purchase Series Posting window, where not all required Actual Quantities have been added, then the Purchasing Series Posting Catchweight Errors window will be displayed.
2. All transactions requiring the addition of Actual Quantities will be displayed in the scrolling window. Click on a line then click Select. The selected transaction will be displayed in the Receivings Transaction Entry window.

3. Add the required Actual Weight then click Save and close the window to return to the Purchasing Series Posting Catchweight Errors window.
4. Repeat these steps for all transactions that require the addition of Actual Quantities.
5. Click OK to return to the Great Plains Purchase Series Posting window.

Catchweight Inventory Transactions

11. Item Transactions Processing - Catchweights version



Transactions >> Inventory >> Transaction Entry

Use the Great Plains Item Transaction Entry window to:

- Entering an adjustment or variance transaction

The Great Plains Item Transaction Entry window

Item Number	U of M	Quantity	Unit Cost	Site ID
LOBSTER	KILO	10.05	\$4.00	WAREHOUSE
Red Lobster				
		0	\$0.00	

The Item Transaction Entry window is given added functionality by the Myridas Catchweights module. Entering an item with a Catchweight Unit of Measure Schedule will display the [Transaction Entry Catchweight Details window](#).

Note that all Catchweight functionality described for the Item Transaction window is also available when making Catchweight item transfers in the Great Plains Item Transfer window.

12. Transaction Entry Catchweight Details window



Transactions >> Inventory >> Transaction Entry

Use the Transaction Entry Catchweight Details window to:

- Enter Catchweight quantities, units and actual weight

*The
Transaction
Entry
Catchweight
Details
window*

Item Number	Catchweight Schedule	CW U of M	Catchweight Qty
Description	U of M	Estimated KILO	Actual KILO
LOBSTER	SHELLFISH	WHOLE	20
Red Lobster	KILO	10.00	10.05

This window will also be displayed if you enter catchweight item transfers through the Item Transfer Entry window.

12.1 Entering Item Transactions for Catchweight Items

To enter transactions for Catchweight items in the Transaction Entry Catchweight Details window:

The transaction should initially be entered following standard Great Plains procedure.

Note that it is recommended that if you want to make adjustments to the Catchweight Quantity only, you first subtract the entire Catchweight and Actual Quantities then add them back at the required quantities.

1. Click into the quantity field in the Item Transaction Entry scrolling window to display the Transaction Entry Catchweight Details window.
2. The Main Selling Unit from the Catchweight Unit of Measure Schedule will be displayed in the CW U of M scrolling window. Select an alternate unit of measure from the drop-down menu as required.

Note that you cannot select an alternate unit of measure if you are working with a dual quantity catchweight.

3. Enter the Catchweight Quantity. This is the quantity of the item to be adjusted, measured in the displayed Catchweight U of M.

The Estimated weight quantity will be amended relative to your selected Catchweight Unit of Measure.

For example, the item Lobster may have a Base Unit of Measure of Kilo, and a selected Catchweight Unit of Measure of Whole, with 1 Whole Lobster

equalling 0.5 kilos. If you enter 10 into the Catchweight Quantity scrolling window then the Estimated Kilo displayed will be 5.

Note that the Base U of M quantity, for example kilo, will be displayed in the Item Transaction Entry scrolling window.

Also note that if you do not enter a Catchweight Quantity then adjustments will be made to the Actual Quantity only.

4. Enter the Actual Quantity in Base Unit of Measure for the Item Number. The Actual Quantity is used to confirm the weight of the transaction line and is based on the Base U of M.

Note that you must enter an Actual Quantity. Not entering an Actual Quantity will result in a warning message being displayed.

5. Click OK to confirm the details and return to the Item Transaction Entry window. Proceed as per standard Great Plains procedure.

12.2 Entering Item Transactions for Lot Controlled Catchweight Items

To enter a transaction for lot controlled catchweight items:

You should enter the transaction as described in 12.1. You will have entered catchweight details in the Transaction Entry Catchweight Details window and returned to the Great Plains Item Transaction Entry window.

1. When you tab out of the Site ID field the Great Plains Item Lot Number Entry window will be displayed.

The Great Plains Item Lot Number Entry window

Item Number	LOBSTER	Extended Qty	10.05
Description	Red Lobster	Lots Selected	10.05
Site ID	WAREHOUSE	Quantity Selected	0.00
Quantity Type	On Hand	Quantity Available	0.00
Lot Number			
Bin			

Available	Quantity Selected	Quantity Available	Bin

Selected	Quantity	Bin
L000000000000000000318	10.05	

2. Enter a lot number.
3. Pressing Tab or clicking Insert will display the Item Transaction Lot Entry Catchweight Details window.

The Item Transaction Lot Entry Catchweight Details window

Extended CW Qty	Catchweight Schedule	CW U of M	Catchweight Qty
Remaining To Select	U of M	Estimated KILO	Actual KILO
20	SHELLFISH	WHOLE	20
20	KILO	10.00	10.05

Lot Number: L000000000000000000

4. Enter the Catchweight Quantity and Actual Quantity that you want to add to the lot number.

Note that you may add the complete transaction quantity to one lot, or distribute it between multiple lots.

Also note that the Catchweight Qty entered cannot be greater than the Remaining to Select quantity. The Actual Qty cannot be greater than the Actual Remaining Qty (not displayed). You cannot make entries that would leave either the actual or catchweight remaining quantities as a negative value.

5. Click OK to return to the Item Lot Number Entry window. The Actual Quantity selected will be displayed in the Quantity Selected field.
6. Click Insert.
7. If you are assigning the transaction items to more than one lot number, then continue entering lot numbers for the item (steps 2 to 6). The Quantity Selected must equal the items extended quantity before you can move to the next line item in the Item Transaction Entry window or the Item Transfer Entry window.
8. Click OK to confirm the details and return to the Item Transaction Entry window.

Note that you can click Cancel at any point prior to clicking the OK button to close the Item Transaction Lot Entry Catchweight Details window.

13. Stock Count Entry – Catchweights Version

The Great Plains Stock Count Entry facility has been given added functionality by the Myridas Catchweights module to account for stock counts on Catchweight items.

Clicking the Counted Quantity Expansion button on Catchweight items will open the Catchweight Unit of Measure Entry window.

*The Great
Plains Stock
Count Entry
window*

The screenshot shows the 'Stock Count Entry' window. At the top, there are fields for 'Stock Count ID' (SHELLFISH1004), 'Description' (shellfish stockcount 1004), 'Status' (Stated), and 'Document Date' (00/00/0000). There are also checkboxes for 'Autopost Stock Count Variances' and 'Reuse Stock Count'. Below these is a 'Sort By' dropdown menu set to 'Site ID / Bin / Item Number'. The main area is a table with the following columns: Item Number, U of M, Counted Qty, Variance Qty, and Verified. The table contains two rows: CRAB and LDBSTER, both with a quantity of 0.00. At the bottom of the window, there are buttons for 'Distribution', 'Serial/Lot', 'Upgraded Tin', and 'Tin History'.

Item Number	U of M	Counted Qty	Variance Qty	Verified
CRAB	KILO	0.00	0.00	<input type="checkbox"/>
LDBSTER	KILO	0.00	0.00	<input type="checkbox"/>

14. Catchweight Unit of Measure Entry window



Transactions >> Inventory >> Stock Count Entry >> Counted Quantity Expansion button

Use the Catchweight Unit of Measure Entry window to:

- Enter details of stock counts on catchweight items

*The
Catchweight
Unit of
Measure
Entry
window*

U of M	Unit Counted	KILO Counted	Unit Captured
WHOLE	40	19.50	40
l	0.00	0.00	0.00

Total Extended Counted Qty: 19.50

14.1 Entering Stock Counts for Catchweight Items

To enter stock count details for Catchweight items in the Catchweight Unit of Measure Entry window:

The stock count should initially be entered following standard Great Plains procedure in the Stock Count Entry window.

1. In the Great Plains Stock Count Entry window select the catchweight item/site combination that results will be entered for.
2. Click the Counted Qty expansion button display the Catchweight Unit of Measure Entry window.
3. Enter a Unit of Measure in the scrolling window or click the lookup to select a Unit of Measure from the Catchweight Unit of Measure Lookup window.



Note that if the item is on a Dual Quantity Catchweight Schedule then the Catchweight Unit of Measure (as opposed to the Base U of M) will already be displayed in the scrolling window. The stock count results **must** be entered in this Unit of Measure.

Also note that you cannot delete or change a Unit of Measure once selected. If the current Catchweight Schedule is **not** Dual Quantity then you can delete the row (Edit >> Delete Row) and re-enter the Unit of Measure.

4. Enter the quantity that has been counted into the Unit Counted scrolling window, in the displayed Unit of Measure.



Note that you can click the Show button to view the Unit Captured. This is the quantity of the item held on the system at the start of the stock count, in the displayed Unit of Measure.

5. For **Dual Quantity** items:

Enter the Base U of M Counted quantity

For **non-Dual Quantity** items:

The Base U of M Counted quantity will be calculated automatically.

6. Repeat step 3 to 5 until you've entered all count results for the item-site combination. As you move off each line, the extended quantity—the equivalent in the base unit of measure, according to the assigned unit of measure schedule—is calculated and displayed.

Note that only one line can be entered for dual Quantity Catchweight items.

7. The Total Extended Counted Qty will be automatically calculated.
8. Click OK to return to the Stock Count Entry window.

Repeat these steps for each Catchweight item on the stock count.

Note that for any lot controlled catchweight items you must also enter lot number information (see below).

To enter count results for lots not listed in the scrolling window, enter the lot number in the first blank line in the scrolling window, and then enter the count quantity.

4. If you need to verify any variance quantities then follow standard Great Plains procedure.
5. Click OK to return to the Stock Count Entry window.

Catchweight Sales Processing

15. Sales Order Processing – Catchweights Version



Transactions >> Sales >> Sales Transaction Entry

Use the Sales Transaction Entry window:

- To enter details of sales orders, invoices, quotations and returns

The Sales Transaction Entry window

The Sales Transaction Entry window is given added functionality by the Myridas Catchweights module. Entering an item with a Catchweight Unit of Measure Schedule will display the [Sales Transaction Catchweight Details window](#).

You can also use the Extras option to display the [Sales Transaction Catchweight Enquiry window](#).

Note that if there is a shortage of stock then you can select either the Override Shortage option or the Back Order **All** option; it is recommended that you **do not** select to Back Order Balance, to avoid stock irregularities. Note that if the Override Quantity Shortages option is not selected in the Sales Order Processing Setup Options window, and a catchweight quantity greater than the quantity available is entered in the Sales Transaction Catchweight Details window, the user will be unable to close the window until the quantity entered is amended.

If you have enabled the Allow All Back Ordered Items to Print on Invoice option in the Sales Order Processing Setup window, then Back Ordered Catchweight items will appear on relevant invoices, with the quantity of 0. The Qty. to Back Order shown on the printed invoice will be an estimated quantity. However, you will not be able to alter the quantity of the Back Ordered item on the invoice in the

Sales Transaction Catchweight Details window. Likewise you cannot amend item quantities where you have selected to Override Shortage on the order.

16. Sales Transaction Catchweight Details window



Transactions >> Sales >> Sales Transaction Entry

Use the Sales Transaction Catchweight Details window to:

- Enter Catchweight quantities, units and actual weight

The Sales Transaction Catchweight Details window

Item Number	Description	Catchweight Schedule	U of M	CW U of M	Estimated KILO	Catchweight Qty
	LOBSTER	SHELLFISH		WHOLE		10
	Red Lobster	KILO			5.00	4.95

Catchweight Available:

Buttons: Clear, OK, Cancel

This window will also be displayed if you enter sales lines individually through the Sales Item Detail Entry window.

The CW QTY Available is the quantity of the item available at the site on the sales transaction, in the displayed catchweight unit of measure.

Note that if you selected the Order By Weight option in the Catchweight Setup window, and are entering a sales **order** for a catchweight item, then an additional order by quantity field will be displayed.

Ordered By Amount field

Ordered kilo

Enter the quantity you want to order in the base unit of measure in this field. The Catchweight Quantity will be calculated automatically.

16.1 Applying Catchweight Details to Sales Transactions

To apply Catchweight details to Sales Transactions in the Sales Transaction Catchweight Details window:

The transaction should initially be entered following standard Great Plains procedure.

1. Click into the quantity field in the Sales Transaction Entry scrolling window to open the Sales Transaction Catchweight Details window.
2. The Main Selling Unit from the Catchweight Unit of Measure Schedule will be displayed in the CW U of M scrolling window. Select an alternate unit of measure from the drop-down menu as required.

Note that if you enter a non-existent Catchweight U of M a message will be displayed asking if you want add it to the Catchweight. Click Yes to display the [Catchweight Maintenance window](#) where you can manually add the unit of measure. This does not apply to Dual Quantity Catchweight items.

3. Enter the Catchweight Quantity. This is the quantity of the item to be received, measured in the displayed Catchweight U of M.

The Estimated weight quantity will be amended relative to your selected Catchweight Unit of Measure.

For example, the item Lobster may have a Base Unit of Measure of Kilo, and a selected Catchweight Unit of Measure of Whole, with 1 Whole Lobster equalling 0.5 kilos. If you enter 10 into the Catchweight Quantity scrolling window then the Estimated Kilo displayed will be 5.

Note that the Base U of M quantity, for example kilo, will be displayed in the Sales Transaction Entry scrolling window. If you have set the Catchweight (in the Catchweight Maintenance window) to Add Text then you can click the Show button to display, for example, the number of whole Lobsters the quantity entered is equivalent to.



4. Enter the Actual Quantity in Base Unit of Measure for the Item Number. The Actual Quantity is used to confirm the weight of the transaction line and is based on the Base U of M. This may be entered at a later date, for example, after the items have been picked.



You can click the Expansion button to open the Actual Quantity Breakdown window, where you can enter Actual Qty details.



If you attempt to Confirm Picking of items that have not had an actual quantity entered against them then a warning will be displayed indicating that an item or items require actual quantities to be set.

Also note that the Actual Quantity should be within the percentage variance (the difference between the Estimated and Actual Quantity) set in the [Catchweight Setup window](#). If you enter an Actual Quantity greater than the percentage variance then you will receive a warning. Click OK to continue with the transaction.

If the Confirm option was not selected then you do not need to enter an Actual Quantity.

5. Click OK to confirm the details and return to the Sales Transaction Entry window. Proceed as per standard Great Plains procedure.

If the document type you are entering is a Return and you are not using the Myridas Returns Management module then the Sales Returned Catchweight Quantities Entry window will be displayed when you click OK.

2. Enter a lot number.

Note that for Dual Quantity Catchweight Lot Numbered items in sales orders and invoices you cannot enter a Lot Number. You must select one from those displayed in the scrolling window by tabbing down to the Lot Number you require.

3. Enter the Catchweight Selected quantity and Actual quantity that you want to assign to the lot number.

Note that you may assign the complete transaction quantity to one lot, or distribute it between multiple lots.

Also note that the Catchweight Qty entered cannot be greater than the Catchweight Remaining to Select quantity. The Actual Qty cannot be greater than the Actual Remaining to Select Qty. You cannot make entries that would leave either the actual or catchweight remaining quantities as a negative value.

4. Click Insert.
5. If you are assigning the transaction items to more than one lot number, then continue entering lot numbers for the item (steps 2 to 4). The Quantity Selected must equal the items extended quantity before you can move to the next line item in the Sales Transaction Entry window.
6. Click OK to confirm the details and return to the Sales Transaction Entry window.

17. Actual Quantity Breakdown window



Transactions >> Sales >> Sales Transaction Entry >> Sales Transaction Catchweight Details window >> Expansion button

Use the Actual Quantity Breakdown window to:

- Enter Actual quantities of picked items

The Actual Quantity Breakdown window

Occurrence of WHOLE	Actual Breakdown in KILO	
1	0.50	
2	0.50	
3	0.45	
4	0.45	
5	0.55	
6	0.55	
Actual KILO		4.95
Estimated KILO		5.00

Note that this window can also be viewed by clicking the expansion button on the [Sales Transaction Catchweight Enquiry window](#).

17.1 Entering Actual Weight Quantities

To enter actual weight quantities into the Actual Quantity Breakdown window:

1. The number of Occurrence fields will match the Catchweight Qty. For example, if you have entered a Catchweight Qty of 6, then there will be 6 Occurrence fields.
2. Enter the actual quantity of each picked item into the Actual Breakdown scrolling window. The Base Unit of Measure will be displayed after Actual Breakdown in – actual quantities should be entered in this unit of measure.

The total of all entered quantities will be displayed in the Actual quantity field. The Estimated quantity will display the system-estimated quantity in this selected unit of measure.

- When you have entered actual quantities for all your picked items click the OK button.

Note that you can click Clear at any point to remove any entries that you have made.

18. Sales Returned Catchweight Quantities Entry window



Transactions >> Sales >> Sales Transaction Entry >> Sales Transaction Catchweight Details >> OK button (when entering a return document)

Use the Sales Returned Catchweight Quantities Entry window to:

- Enter details of customer returned catchweight items

The Sale Returned Catchweight Quantities Entry window

tcs20 Sales Returned Catchweight Quantities Entry		Return Quantity Type:	
Item Number	LOBSTER	On Hand	0
Description	Red Lobster	Returned	1
Catchweight U Of M	WHOLE	In Use	0
Quantity	1	In Service	0
Site ID	WAREHOUSE	Damaged	0
		Total	1

Note that if you are using the Returns Management module then the quantity will be allocated to "Return" quantity type, unless you are editing an existing line in which case the Sales Returned Catchweight Quantities Entry window **will** be displayed.

18.1 Entering Returns for Catchweight Items

To enter returns for catchweight items in the Sale Returned Catchweight Quantities Entry window:

- The window will be displayed with the Quantity displayed in the Catchweight Unit of Measure.

2. Enter the quantity breakdown into the Return Quantity Type fields. You will not be able to proceed until the entire Quantity has been assigned to Return Quantity Types.

Note that clicking Documents will display the Receivables Transaction Enquiry - Debtor window.

3. Click OK to return to the Sales Transaction Entry window.

Note that you can click Cancel at any point to return to the [Sales Transaction Catchweight Details window](#).

19. Base Return on Invoice - Item Selection Catchweight Details window



Transactions >> Sales >> Sales Transaction Entry >> Click the Item Number lookup

Use the Base Return on Invoice - Item Selection Catchweight Details window to:

- Enter catchweights details for returns based on invoices

Item Number	Invoice Qty	Posted Returns	On Collections	Returnable	CHOP To Return
Item Description	Returnable KILD	Estimated KILD	Actual KILD		
LOBSTER	10.00	0.00	0.00	10.00	10.00
Red Lobster		5.00	5.00	5.00	5.00

The Base Return On Invoice - Item Selection Catchweight Details window

Note that this window is only available if you have access to the Myridas Returns Management module.

19.1 Entering Catchweight Details for Returns Based on Invoices

To enter catchweight details for returns based on invoices in the Base Return on Invoice - Item Selection Catchweight Details window:

The Base Return On Invoice - Item Selection Catchweight Details window will display the Item Number with quantity details in the base unit of measure. The window will be displayed automatically when you click the Item Number lookup in the Sales Transaction Entry window.

1. The window will be displayed with details of the currently selected item Number.
2. Enter the Catchweight Quantity to Return. This should be greater than zero but not greater than the returnable quantity.

The Estimated weight quantity will be amended relative to your selected Catchweight Unit of Measure.

For example, the item Lobster may have a Base Unit of Measure of Kilo, and a selected Catchweight Unit of Measure of Whole, with 1 Whole Lobster equalling 0.5 kilos. If you enter 10 into the Catchweight Quantity scrolling window then the Estimated Kilo displayed will be 5.

3. Enter the Actual Quantity. This should be greater than zero but not greater than the Returnable Actual Quantity.
4. Click OK to confirm the details and return to the Base Return on Invoice - Item Selection window.

Note that you can choose to clear your selection at any point by clicking the Clear button.

20. Unconfirmed Catchweight Report



Reports >> Myridas >> Catchweights >> Unconfirmed Catchweight Report

Use the Unconfirmed Catchweight Report to:

- Identify Catchweight invoices where lines have not had an actual weight entered against them

*The
Unconfirmed
Catchweight
Report
window*

20.1 Printing Unconfirmed Catchweight Reports

To print an Unconfirmed Catchweight Report from the Unconfirmed Catchweight Report window:

1. Select whether to report on fulfillment orders or invoices from the drop-down menu.
2. All will be selected by default for each reporting option. Accept this selection or click the relevant From button and enter ranges or select them using the lookups.
3. Click whether you want to include All lines or Unconfirmed lines only on the print.

4. Click Print to produce the Unconfirmed Catchweight Report.

To clear your selections at any point click the Clear button.

Catchweight Enquiries and Alternate Windows

22. Sales Transaction Catchweight Enquiry window



Transactions >> Sales >> Sales Transaction Entry >> Extras >> Additional >> Catchweight Enquiry

Use the Sales Transaction Catchweight Enquiry window to:

- Enquire about Catchweight details in Sales Transactions

The Sales Transaction Catchweight Enquiry window

Item Number	Catchweight Qty	Quantity Ordered	Unit Price	Description	Catchweight U O I M	U O I M	Extended Price
LOBSTER		10	5.00	(10xWHOLE) Red Lobster	WHOLE	KILO	\$20.00
	5.00	0.00	0.00				5.00
Subtotal							\$20.00

Terms Discount Taken	\$0.00
On Account	\$20.00
Comment ID	
Document Status	New
Tax	\$0.00
Total	\$20.00

22.1 Enquiring about Catchweight Details

To enquire about Catchweight details in the Sales Transaction Catchweight Enquiry window:



1. The window will be displayed with details of all items in the relevant sales transaction. Click the Show button to display full details.

Non Catchweight items will have no information displayed in the Catchweight Quantity, Catchweight Unit of Measure and Actual Quantity scrolling windows.

- Click OK to return to the Sales Transaction Entry window.



Note that you can click the expansion button to open the Actual Quantity Breakdown window where you can view the actual quantities of Catchweight items.

23. Catchweight Enquiry window



Enquiry >> Sales >> Sales Documents >> Click on line containing Catchweight item >> Click Document Number link >> Click on Catchweight line >> Click the Expansion button >> Sales Item Detail Enquiry Zoom window

Use the Catchweight Enquiry window to:

- Enquire about catchweight item transactions

*The
Catchweight
Enquiry
window*

Item Number	Catchweight Schedule	CW U of M	Catchweight Qty
Description	U of M	Estimated KILO	Actual KILO
LOBSTER	SHELLFISH	WHOLE	10
Red Lobster	KILD	5.00	5.00

23.1 Enquiring About Catchweight Item Transactions

To enquire about Catchweight transactions in the Catchweight Enquiry window:

- The Catchweight Enquiry window will be displayed at the bottom of the Sales Item Detail Enquiry Zoom window when you select a Catchweight item in the Sales Transaction Enquiry Zoom window.

Note that the Catchweight Enquiry window is also available for inventory, purchasing and receivings transactions. To display the window for these types of transactions, simply proceed to the window via the appropriate inventory, purchasing or receivings transactions windows as required.

25. Catchweight Item Enquiry window



Enquiry >> Myridas >> Catchweights >> Catchweight Item Enquiry

Use the Catchweight Item Enquiry window to:

- Enquire about Catchweight items

*The
Catchweight
Item Enquiry
window*

Category	Catchweight U Of M	Base U Of M
On Hand	20	10.05
Allocated	10	5.00
Available	10	5.05
Sold	20	9.95
Returned	0	0.00
In Use	0	0.00
In Service	0	0.00
Damaged	0	0.00
Back Ordered	0	0.00
On Order	0	0.00

25.1 Enquiring About Catchweight Items

To enquire about Catchweight Items in the Catchweight Item Enquiry window:

1. Enter the Item Number that you want to view or select it using the lookup.
2. Select to view All Sites or click Site ID and use the Browse buttons or click the lookup to select a specific site to view.
3. Select a Catchweight U of M from the drop-down menu.
4. Quantity variations for each Unit of Measure will be displayed.
5. Click OK to close the window.

5. For Sorted By click to display Lot Numbers by Date or by Lot (in alphanumeric order).
6. All Lot Numbers for the Item Number within the selection range will be displayed in the scrolling window with quantity details.

Total quantities for the selection range will be displayed in the lower scrolling window.

Click the Print icon to print the Catchweight Lot Number Enquiry report.

Note that if you change your selection criteria you can click redisplay to show the new Lot Number range.

7. Click OK to close the window.

28. Template Selling – Catchweights Version

The Template Select window a feature of the Myridas Template Selling module, has been given added functionality by the Myridas Catchweights module.

With the Catchweights enhancement, clicking on a Catchweight item in the Items scrolling window will display Catchweight Units of Measure and quantities in the Item History scrolling window, if they have been entered for the listed orders.

The Template Select window – Catchweights version

tcs01 Template Select

Site ID: WAREHOUSE Main Site
 Debtor ID: GREENWAY0001 Greenway Foods
 Ship to Address: PRIMARY 87654 N 19th Avenue
 Template: GREENWAY Greenway Template
 Currency ID: Z-US\$

Sequence No.	Item Number	Description	U of M	QTY Avail
20	LOBSTER	Red Lobster		
40	CRAB	White Crab		

Order Date	Document No.	U of M	Quantity	Price
12/04/2007	STDINV2266	KILO	4.95	\$4.00

by Sequence Number [v] [Select] [Cancel]

29. Order History window – Catchweights Version

The Order History window, a feature of the Myridas Template Selling module, has been given added functionality by the Myridas Catchweights module.



With the Catchweights enhancement, clicking on the Show button will display Catchweight Units of Measure and quantities that have been entered for the listed orders.

The Order History window – Catchweights version



Debtor ID	GREENWAY0001	Greenway Foods	
Ship To Address	PRIMARY	87654 N 19th Avenue	
Document No.	STDINV2266	Date	12/04/2007
Currency ID	Z-US\$	Debtor PO Number	

Item Number	U of M	Qty	Price
Item Description	CW U Of M	CW Quantity	Extended Price
LOBSTER	KILO	4.95	\$4.00
Red Lobster	WHOLE	10.00	\$19.80

Appendix A

Access to Myridas Windows

Catchweights

Window Name	 Menu Access	 Other Access
Actual Quantity Breakdown		Transactions >> Sales >> Sales Transaction Entry >> Sales Transaction Catchweight Details >> Expansion button
Assign Catchweight to Item Number	Cards >> Myridas >> Catchweights >> Assign Catchweight to Item Number	
Assign Items to Catchweights	Cards >> Myridas >> Catchweights >> Assign Items to Catchweights	Cards >> Myridas >> Catchweights >> Catchweight Maintenance >> Assign button
Base Return On Invoice - Item Selection Catchweight Details		Transactions >> Sales >> Sales Transaction Entry >> Click the Item Number lookup
Catchweight Allocation Range		Cards >> Myridas >> Catchweights >> Assign Items to Catchweights >> Ranges button
Catchweight Enquiry		Enquiry >> Sales >> Sales Docs >> Click on line containing Catchweight item >> Click Document Number zoom >> Click on Catchweight line >> Click the Expansion button >> Sales Item Detail Enquiry Zoom window Also available for Purchasing and

		Receiving transactions
Catchweight Item Enquiry	Enquiry>> Myridas >> Catchweights>> Catchweight Item Enquiry	
Catchweight Lot Number Enquiry	Enquiry >> Myridas >> Catchweights >> Catchweight Lot Enquiry	
Catchweight Purchasing Lot Number Enquiry Zoom		Enquiry >> Purchasing >> Purchase Order Docs >> Click on line containing Catchweight item >> Click Document Number zoom >> Click on Catchweight line >> Click the Expansion button >> Click the Serial/Lot button
Catchweight Sales Lot Number Enquiry Zoom		Enquiry >> Sales >> Sales Documents >> Click on line containing Catchweight item >> Click Document Number zoom >> Click on Catchweight line >> Click the Expansion button >> Click the Serial/Lot button
Catchweight Maintenance	Cards >> Myridas >> Catchweights >> Catchweight Maintenance	
Catchweight Setup	Tools >> Setup >> Myridas >> Catchweights >> Catchweight Setup	
Catchweight Unit of Measure Entry		Transactions >> Inventory >> Stock Count Entry >> Counted Quantity Expansion button
Item Transaction Lot Entry Catchweight		Transactions >> Inventory >> Item

Details		Transaction Entry
Purchase Order Catchweight Details		Transactions >> Purchasing >> Purchase Order Entry
Purchase Series Posting Catchweight Errors		Transactions >> Purchasing >> Series Post >> Click on a Batch ID where Actual Quantities have not been entered for one or more items in a transaction
Receivings Transaction Catchweight Details		Transactions >> Purchasing >> Receivings Transaction Entry
Sales Returned Catchweight Quantities Entry		Transactions >> Sales >> Sales Transaction Entry >> Sales Transaction Catchweight Details >> OK button (when entering a return document)
Sales Transaction Catchweight Details		Transactions >> Sales >> Sales Transaction Entry
Sales Transaction Catchweight Enquiry window		Transactions >> Sales >> Sales Transaction Entry >> Extras >> Additional >> Catchweight Enquiry
Transaction Entry Catchweight Details		Transactions >> Inventory >> Transaction Entry
Unconfirmed Catchweight Report		Reports >> Myridas >> Catchweights >> Unconfirmed Catchweight Report

Appendix B

Alternate Great Plains Windows

Some Great Plains windows have been modified to incorporate Myridas behaviour:

Great Plains Window Name	Series	Myridas Module	Modification
Item Stock Enquiry	Inventory	Catchweights	Shows catchweight quantities
Purchasing Lot Number Entry	Purchasing	Catchweights	Allows entry of catchweight lot details
Sales Lot Number Entry	Sales	Catchweights	Allows entry of catchweight lot details
Sales Transaction Entry	Sales	Catchweights	Displays Catchweight quantities

Appendix C

Modified Myridas Windows with additional modules

Some Myridas windows will have additional functionality when used in conjunction with other Myridas modules:

Myridas Window Name	Module	Additional Myridas Module	Modification
Template Select window	Template Selling	Catchweights	Clicking on a Catchweight item in the Items scrolling window will display Catchweight Units of Measure and quantities in the Item History scrolling window
Order History window	Template Selling	Catchweights	Clicking the Show button will display Catchweight Units of Measure and quantities that have been entered for the listed orders
Base Return On Invoice - Item Selection window	Returns Management	Catchweights	Opening this window when a catchweight item is selected will also display the Base Return On Invoice - Item Selection Catchweight Details window

Appendix D

Myridas Reports

Myridas provides reports to increase information visibility.

Report Name	Module	Functionality
Catchweight Lot Number Enquiry report	Catchweights	Prints catchweight lot details
Unconfirmed Catchweight report	Catchweights	Prints details of catchweight invoices where lines have not had an actual weight entered against them, based on the range selection made in the Unconfirmed Catchweight Report window

The Catchweights module can also be used in conjunction with Great Plains Report Writer to provide additional reporting parameters.

Catchweight Report Functions

Overview

There are three CW Report Functions:

1. `rw_tcsSOPFN00020_GetCWDisplayQTY`

Returns the CW Display QTY for the passed SOP Type, SOP Number and Line Item Sequence.

2. `rw_tcsSOPFN00020_GetCWDisplayUOfM`

Returns the CW Display U Of M for the passed SOP Type, SOP Number and Line Item Sequence.

3. `rw_tcsSOPFN00020_GetCWDisplayQTYForInvoicedOrder`

Only used for Invoices. Even though 'SOP Type' is passed, if it is not set to `SOP_INVOICE` then the script will abort.

The report passes an Item Line off an Invoice Document and this function attempts to read in the associated Order and gets the CW Display QTY for it.

All three functions need the following three parameters passed to them:

- SOP Type
- SOP Number
- Line Item Sequence

Using in a report

To add the CW Report Functions to a report, follow these steps (note that for this example you will be adding the `rw_tcsSOPFN00020_GetCWDisplayQTY` function):

1. Open the Report Layout window.
2. On the Toolbox window, select Calculated Fields in the drop-down list
3. Click the New Button.
4. Choose a name - for example `CWDisplayQTY`.
5. Result type will vary depending on which CW Report Function you are using:
 - `rw_tcsSOPFN00020_GetCWDisplayQTY` - Currency
 - `rw_tcsSOPFN00020_GetCWDisplayUOfM` - String
 - `rw_tcsSOPFN00020_GetCWDisplayQTYForInvoicedOrder` - Currency
6. Expression Type should be left at Calculated.
7. Select the Functions Tab.
8. Select the User Defined radio button
9. From the Core DDL, select Sales.
10. From the Function DDL, select the relevant Function (`rw_tcsSOPFN00020_GetCWDisplayQTY` in this example).
11. Click the Add Button.
12. You need to pass parameters to the function. It is assumed the report you are creating contains the 'Sales Transaction Amounts Work' table (`SOP_LINE_WORK`).
13. Select the Fields tab.
14. Select 'Sales Transaction Amounts Work' from the Resources DDL.
15. In the Field DDL, select 'SOP Type' and press the Add Button.
16. In the Field DDL, select 'SOP Number' and press the Add Button.
17. In the Field DDL, select 'Line Item Sequence' and press the Add Button.
18. All done, press OK to save the Calculated Field.
19. You may now drag the Calculated Field on to the report.
20. You can now assign formatting as normal to the field.

Appendix E

Support Tools

Myridas provides additional windows to enable you to adjust any dual quantity catchweight quantities that do not accurately reflect performed transactions.

Catchweight quantities can be adjusted manually using the Dual Quantity Adjustments window or automatically by using the Reconcile button in the Show Allocated Transactions window.

Note that these windows are not available from the palette. To display the windows you should add tcs20 Dual Quantity Reconcile to your shortcut bar.

Reconciling Dual Quantity Allocations

*The Dual
Quantity
Reconcile
window*

Site	On Hand	Allocated	Available
WAREHOUSE		20	10
KILO		10.05	5.00

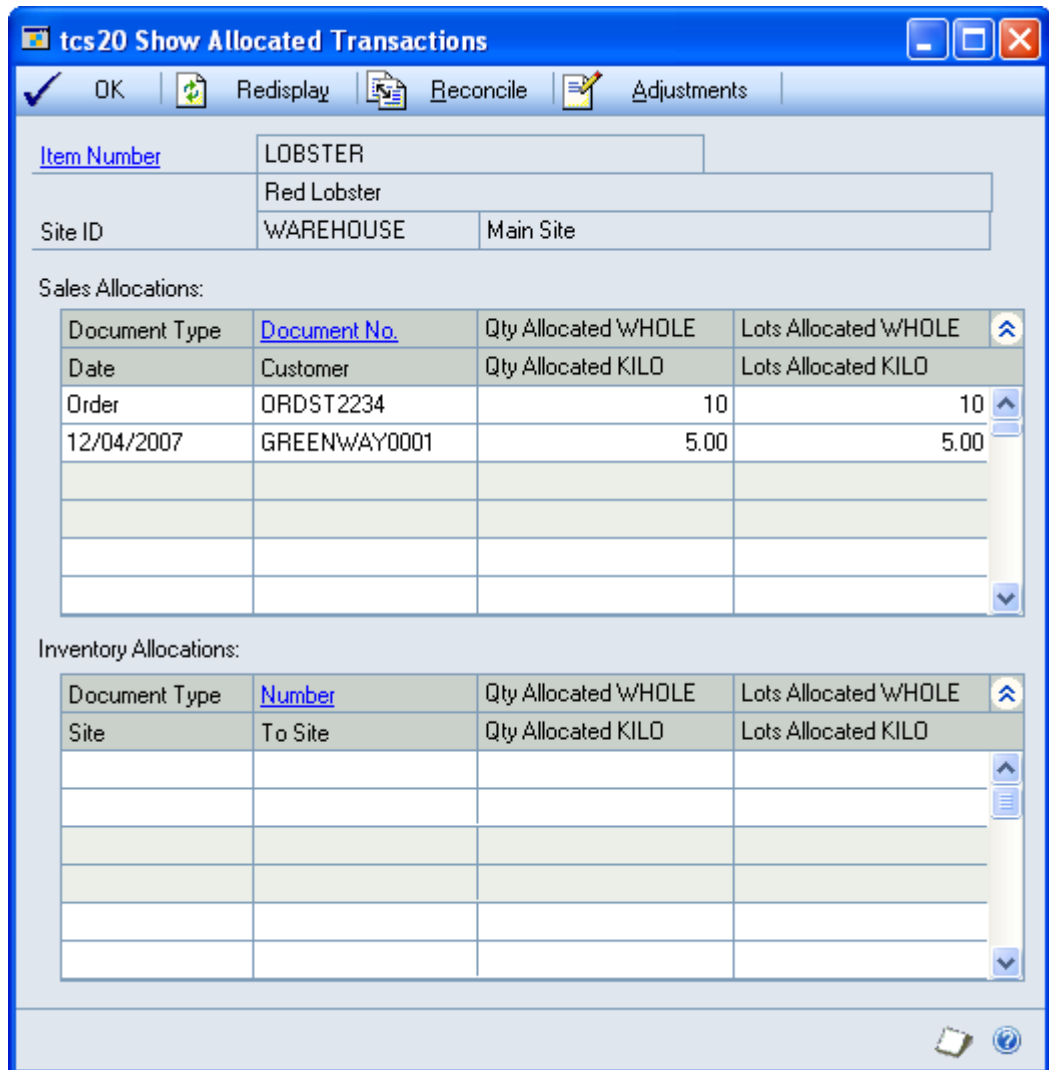
	On Hand	Allocated	Available
WAREHOUSE			
KILO		10.05	5.00
WHOLE		20	10

1. Enter an item number or select one using the lookup.
2. All Site IDs will be selected by default. Click the Display options to select to view All sites or sites with Allocated dual quantities only.

Alternatively click Site ID and enter or browse to a specific site.

3. Details for the selected item number/site combination will be displayed in the scrolling windows with catchweight unit of measure breakdowns in the lower window. Click OK to close the window or click on a line then click the Allocated zoom button to view specific transactions in the Show Allocated Transactions window.

The Show Allocated Transactions window



4. Specific transactions with allocated dual quantities for the selected item number/site combination will be displayed in the in the scrolling windows.

Upper scrolling window	Displays sales transactions with allocated dual quantities
Lower scrolling window	Displays inventory transactions with allocated dual quantities

5. Click OK to close the window or select Reconcile or Adjustments (see below).

Adjustments

1. Click on a line and click Adjustments to display the Dual Quantity Adjustments window.

*The Dual
Quantity
Adjustments
window*

Lot Number	Received WHOLE	Allocated WHOLE	Sold WHOLE	Available WHOLE	
Site ID	Received KILD	Allocated KILD	Sold KILD	Available KILD	
Site Description			Date	Qty. Type	Cost
LO0000000000000000000000318	20	10		10	
WAREHOUSE	10.05	5.00		5.05	
Main Site			12/04/2007	On Hand	\$4.00

Quantities	On Hand	Allocated	Available
WHOLE		20	10
KILD		10.05	5.05

2. The current item number/site combination will be displayed. Select alternate values as required. Lot specific details are displayed in the upper scrolling window. Site specific details are displayed in the lower scrolling window. Catchweight quantities to be changed for displayed lots.

Note that if you have selected a non-lot numbered catchweight item then catchweight site details will still be displayed in the lower scrolling window.

3. All dates will be selected by default. Click From and enter a date range to view details for specified dates only. Display options enables you to view All or Available Lot details. Select as required. Sorted By enables you to view in Date or Lot order. Select as required. These options apply to lot details in the upper scrolling window only.
4. In the scrolling window catchweight quantities to be changed for displayed lots. On Hand and Allocated quantities can be changed at site level in the lower scrolling window. For lot tracked catchweight items, received and allocated quantities, can be changed for individual lots in the upper scrolling window.
5. Click OK to save any changes made and close the window.

Reconcile

1. Click reconcile and the catchweight allocated quantity at site level is reconciled against all existing transactions for the item. The allocated quantity is recalculated by summing;
 - all sales documents that have catchweight quantities allocated against them
 - any current negative inventory adjustments
 - any current inventory transfers from the site

If the current site allocated quantity is different to the reconciled allocated quantity then it will be adjusted to the recalculated figure.

If the item is lot controlled then a further reconciliation of allocated quantities for individual lots will be done in a similar way. This may result in the allocated figure for individual lots being adjusted.

Index

A

- Actual Quantity Breakdown window.. 41
- Adding
 - actual weight quantities prior to transaction posting 24
- Applying
 - catchweight details to sales transactions..... 37
 - catchweights to purchase orders 17
 - catchweights to receivings transactions..... 20
- Assign Catchweights to Item Number window 12
- Assign Items to Catchweights window 13
- Assigning
 - catchweights to individual items 12
 - multiple items to catchweights 13
 - range of items to catchweights 15
- Auto-receiving catchweights 19

B

- Base Return on Invoice - Item Selection Catchweight Details window..... 43

C

- Catchweight
 - purchasing..... 16
- Catchweight Allocation Range window 14
- Catchweight Enquiries and Alternate windows..... 48
- Catchweight Enquiry window..... 48
- Catchweight Inventory Transactions .. 26
- Catchweight Item Enquiry window 50
- Catchweight Lot Number Enquiry window 51
- Catchweight Maintenance window..... 9
- Catchweight Purchase Lot Number Enquiry Zoom window..... 49
- Catchweight Sales Lot Number Enquiry Zoom window..... 49
- Catchweight Sales Processing..... 36
- Catchweight Setup window 8
- Catchweight Unit of Measure Entry window 32
- Catchweights..... 6
 - dual quantities..... 7
 - setup and maintenance..... 8
- Catchweights Glossary 7
- Creating

- catchweights..... 10

D

- Deleting
 - catchweights..... 10
- Dual Quantity Catchweights 7

E

- Editing
 - catchweights..... 10
- Enquiring
 - about catchweight details 47
 - about catchweight item transactions 48
 - about catchweight items..... 50
 - about catchweight lot details on transactions 49
 - about dual quantity catchweight lot numbers 51
- Entering
 - actual weight quantities..... 41
 - catchweight details for returns based on invoices..... 43
 - item transactions for catchweight items 27
 - item transactions for lot controlled catchweight items 29
 - returns for catchweight items 42
 - sales transactions for lot controlled catchweight items 39
 - stock count lot number information for catchweight items..... 34
 - stock counts for catchweight items 32, 35

I

- Item Stock Inquiry window
 - catchweights version..... 53
- Item Transaction Lot Entry Catchweight Details window 29

O

- Order History window
 - catchweights version 55

P

- Printing Unconfirmed Catchweight Reports 45
- Purchase Order Catchweight Details window..... 17
- Purchasing Series Posting Catchweight Errors window..... 24

R	
Receiving	
auto-receiving	19
lot controlled catchweight items.....	22
Receivings Transaction Catchweight	
Details window	20
Receivings Transactions Entry window	
catchweights version	19
S	
Sales Returned Catchweight Quantities	
Entry window	42
Sales Transaction Catchweight Details	
.....	37
Sales Transaction Catchweight Enquiry	
.....	47
Sales Transaction Entry window	
catchweights version	36
Setting up Catchweights	8
Stock Count Entry	
catchweights version	31
T	
Template Selling	
catchweights version	54
Transaction Entry Catchweight Details	
window.....	27
U	
Unconfirmed Catchweight Report.....	45