

*myridas*TM *User Guide*

Version 7.6 for Great Plains 7.5

Vehicle Load Planning



Trinity Computer Services Limited

May 2003

Contents

CONTENTS	2
USING THIS GUIDE	4
ABOUT MYRIDAS	5
VEHICLE LOAD PLANNING	6
1. LOGISTIC CONTROL SETUP WINDOW - LOAD PLANNING VERSION	8
1.1 <i>Setting up Load Planning details</i>	8
2. EXTRA SITE DETAILS WINDOW – LOAD SCHEDULING	9
2.1 <i>Assigning sites to Load Planning</i>	9
3. SERVICE LEVEL MAINTENANCE WINDOW	10
3.1 <i>Creating and editing service levels</i>	10
4. ITEM U OF M LOAD DETAILS WINDOW	11
4.1 <i>Assigning weights and volumes to items</i>	11
5. VEHICLE MAINTENANCE WINDOW	12
5.1 <i>Creating and editing vehicle details</i>	12
6. LOAD SCHEDULE ROUTE MAINTENANCE WINDOW.....	13
6.1 <i>Creating and editing route descriptions</i>	13
7. EXTRA ADDRESS INFORMATION MAINTENANCE WINDOW - LOAD PLANNING VERSION	14
7.1 <i>Switching Load Planning on for a customer</i>	14
8. DOCUMENT DELIVERY DETAILS WINDOW	15
8.1 <i>Viewing and editing the Load Planning details for a document</i>	16
9. DOCUMENTS NOT ASSIGNED TO LOADS WINDOW	17
9.1 <i>Viewing and processing the unassigned document load schedule</i>	17
10. LOAD MAINTENANCE WINDOW	20
10.1 <i>Creating and editing loads</i>	20
10.2 <i>Assigning documents to loads</i>	21
11. DOCUMENTS ASSIGNED TO LOADS WINDOW	22
11.1 <i>Viewing and processing the assigned document load schedule</i>	22
12. LOAD HEADER MAINTENANCE WINDOW	24
12.1 <i>Creating and editing loads</i>	25
12.2 <i>Transferring documents between loads</i>	25
13. REINSTATE OMITTED DOCUMENT FROM LOAD SCHEDULE WINDOW	26
13.1 <i>Reinstating omitted documents</i>	26
14. LOAD SCHEDULE PURGE WINDOW	27
14.1 <i>Removing load schedule records</i>	27
15. PICKING LISTS AND DESPATCH NOTES BY LOAD WINDOW	28
15.1 <i>Printing picking lists and despatch notes by load</i>	28
16. LOAD SCHEDULE PRINTS WINDOW.....	29
16.1 <i>Printing load schedules</i>	29
17. GREAT PLAINS ADVANCED PICKING WITH VEHICLE LOAD PLANNING.....	30
APPENDIX A	31
ACCESS TO MYRIDAS WINDOWS.....	31
<i>Vehicle Load Planning</i>	31
APPENDIX B	33
MODIFIED GREAT PLAINS WINDOWS.....	33
APPENDIX C	34

MYRIDAS REPORTS 34

INDEX 35

Using this Guide

The graphics in this document are best viewed or printed with Adobe Acrobat Reader version 4.0 or above.

This guide provides user notes for the Myridas Vehicle Load Planning module:

- Vehicle Load Planning



The mouse symbol has been used throughout the manual to help guide you to the location of windows in the software. See [Appendix A](#) for a list of Myridas windows and their location in the software.

A full range of tutorials is also available on our website, <http://www.trinitypartner.com>.

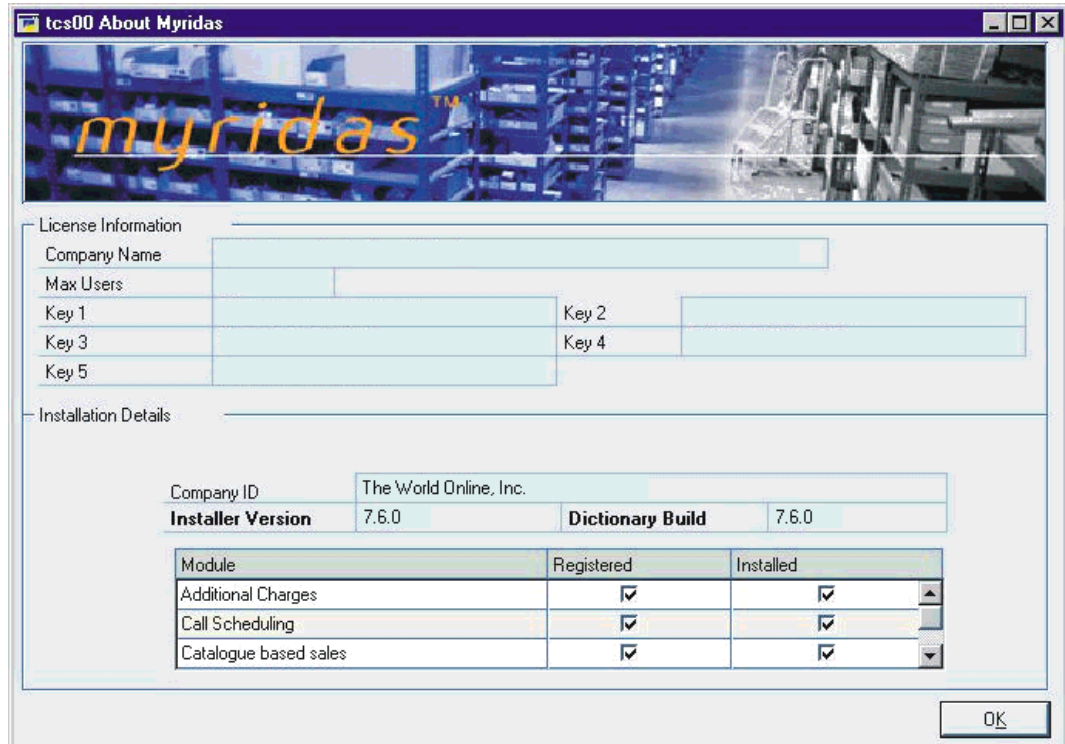
About Myridas



Cards >> Myridas Setup >> About Myridas

Use the About Myridas window to check your license information and installation details. The window will tell you which Myridas modules you are registered to use and which have been installed on your system.

The About Myridas window



Vehicle Load Planning

The Myridas Vehicle Load Planning module provides functionality for the creation and management of delivery loads. Each load can consist of several sales order despatches.

The main features of Load Planning are:

- The allocation of delivery routes and drop numbers to customer ship to addresses
- The application of service level and normal delivery day information to the calculation of order delivery dates
- An overview of order despatch information that is summarised by date and delivery route – this is useful for planning load schedules
- A facility to attach delivery information such as delivery booking details and number of parcels to each despatch
- A facility to transfer bulk orders to invoices for a specified route
- A facility to create loads from despatches and allocate loads to vehicles
- A facility to compare the weight and volume of a load against vehicle capacity
- The production of picking lists and despatch notes by load
- The production of a driver's load sheet which summarises delivery information
- Integration with Great Plains Advanced Picking to print bulk picking list by load

Service levels

Service levels represent the different types of delivery service that you can offer customers, such as next day delivery, express delivery, or next day +1 delivery. Use the [Service Level Maintenance window](#) to create and edit service levels. Assign service levels to customer addresses in the [Extra Address Information Maintenance window](#).

Vehicle and driver details

When a load is created, it can be assigned to a vehicle and a driver. Use the [Vehicle Maintenance window](#) to create and edit vehicle details. Each vehicle must be assigned a capacity weight and a capacity volume. These values are used to ensure that loads do not exceed the capacity of the vehicle. Assign weights and volumes to items in the [Item U of M Load Details window](#).

Route descriptions

Route descriptions are used to categorise customer delivery addresses and help with the assignment of sales documents to different loads. Use the [Load Schedule Route Maintenance window](#) to create and edit route descriptions. Assign routes to customer addresses in the [Extra Address Information Maintenance window](#), or assign a route to a document in the [Document Delivery Details window](#).

Creating and maintaining loads

Edit the delivery details for a sales document in the [Document Delivery Details window](#) *i.e.* enter the number of parcels in the delivery, the delivery date, booking details and a drop number etc. Use the [Documents Not Assigned to Loads window](#)

to view unassigned sales documents and access the [Load Maintenance window](#), where loads are created and documents are assigned to loads.

View the load schedule in the [Documents Assigned to Loads window](#). The load schedule is organised by site, ship date, load and route description. Documents can be transferred between loads in the [Load Header Maintenance window](#).

Print a driver's load sheet with a summary of delivery information in the [Load Schedule Prints window](#).

*Integration
with Great
Plains*

The Vehicle Load Planning module is fully integrated with Great Plains Advanced Picking to enable the printing of bulk picking lists by load. See [Great Plains Advanced Picking with Vehicle Load Planning](#) for further details.

1. Logistic Control Setup Window - Load Planning Version



Setup >> Advanced Distribution >> Logistic Cont. Setup

The Logistic Control Setup window, which is part of the Great Plains Advanced Distribution module, has been modified to include some Load Planning setup details. See the Great Plains Advanced Distribution User Guide for Advanced Distribution functionality.

Use the Logistic Control Setup window to:

- Set up Load Planning details

Section of the modified Logistic Control Setup window

Load Scheduling Setup:	
Days to retain loads	2
System Weight Unit	Kilos
System Volume Unit	C. Metres

1.1 Setting up Load Planning details

To set up Load Planning details in the Logistic Control Setup window:

1. Enter a value in the Days to retain loads field. This value is used during load schedule purging.
2. Enter a unit of weight in the System Weight Unit field. This weight unit will be used throughout load planning.
3. Enter a unit of volume in the System Volume Unit field. This volume unit will be used throughout load planning.
4. Click OK at the bottom of the Logistic Control Setup window.

2. Extra Site Details Window – Load Scheduling



Cards >> Myridas Cards >> Load Planning >> Extra Site Details

Use the Extra Site Details window to:

- Assign sites to Load Planning

The Extra Site Details window

2.1 Assigning sites to Load Planning

To assign a site to load planning in the Extra Site Details window:

1. Enter a Site ID or click the lookup to select one from the Sites window. If you enter a new Site ID, you will be asked if you want to create it.
2. Select the Include in load schedule check box to assign this site to Load Planning.
3. A Load Number consists of a code and a number. Enter a Code and a Number in the Next Load Number fields. This Load Number will be used when loads are created in the [Load Maintenance](#) and [Load Header Maintenance windows](#).
4. Enter a Default Service Level or click the lookup to select one from the Service Level Lookup window. This is the default service level that will be used to calculate the requested ship date (unless a different service level has been assigned to the customer's address). Create service levels in the Service Level Maintenance window (see below).
5. Click the Save button.

Deleting site details

Click the Delete button to delete any load planning details associated with the site. Note that the details will not be deleted if this site is in use within Load Planning.

3. Service Level Maintenance Window



Cards >> Myridas Setup >> Load Planning >> Service Level Maint.

Use the Service Level Maintenance window to:

- Create and edit service levels

The Service Level Maintenance window

Service Level	Next Day		
Description	Next day delivery service		
Days to Delivery	1	Cut Off Time	13:00:00

3.1 Creating and editing service levels

To create and edit service levels in the Service Level Maintenance window:

1. Enter a Service Level or click the lookup to select one from the Service Level Lookup window.
2. Enter a Service Level Description.
3. Enter a number for Days to Delivery. This is the number of days between despatch and delivery, and will be used to calculate a ship date.
4. Enter a Cut Off Time. This is the latest time that an order can be accepted to still comply with the number of delivery days. If an order is placed after the cut off time, the requested ship date will be incremented to the next available delivery day for the customer ([Extra Address Information Maintenance window](#)).
5. Click the Save button.

Deleting service levels

Click the Delete button to delete a service level. Note that a service level will not be deleted if it is currently assigned to a load, a customer or a site.

4. Item U of M Load Details Window



Cards >> Myridas Cards >> Load Planning >> Item U Of M Load Det

Use the Item U of M Load Details window to:

- Assign weights and volumes to an item

*The Item U of
M Load Details
window*

U of M	U of M Volume	Measure	U of M Weight	Measure
Each	2.35	C. Metres	1.15	Kilos
Case	2.00	C. Metres	5.75	Kilos

4.1 Assigning weights and volumes to items

Weights and volumes can only be assigned to items that have a unit of measure schedule.

To assign weights and volumes to an item in the Item U of M Load Details window:

1. Enter an Item Number or click the lookup to select one from the Items window. The unit of measure schedule details will be displayed.
2. For each U of M unit, enter a U of M Volume and a U of M Weight. Click the U of M Schedule zoom to open the Unit of Measure Schedule Setup window which will provide details about each unit of measure unit.

Use the Logistic Control Setup window to assign weight and volume units.

3. Click the Save button.

*Deleting
weights and
volumes*

Click the Delete button to delete the weights and volumes that have been assigned to an item number.

5. Vehicle Maintenance Window



Cards >> Myridas Setup >> Load Planning >> Vehicle Maintenance

Use the Vehicle Maintenance window to:

- Create and edit vehicle details

The Vehicle Maintenance window

Vehicle ID	S473 HDL	<input checked="" type="checkbox"/> Available
Description	Transit Van	
Usual Driver	Simon Greene	
Capacity Weight	1,200.00	Kilos
Capacity Volume	15.00	C. Metres
Comments	Simon doesn't do weekend deliveries	

5.1 Creating and editing vehicle details

To create and edit vehicle details in the Vehicle Maintenance window:

1. Enter a Vehicle ID or click the lookup to select one from the Vehicle Lookup window.
2. Select the Available check box if a vehicle can be used within Load Planning. If a vehicle is not marked as available, it can still be used within load planning. Warnings will be shown whenever loads are assigned to the vehicle or the load vehicle is printed, informing you that this vehicle is not marked as being available.
3. Enter a Vehicle Description (optional).
4. Enter the name of the Usual Driver.
5. Enter a Capacity Weight. Set up the units for capacity weight in the Logistic Control Setup window.
6. Enter a Capacity Volume. Set up the volume units in the Logistic Control Setup window.

The driver's name, capacity weight and capacity volume details can be overwritten for a selected load in the [Load Maintenance](#) and [Load Header Maintenance](#) windows.

7. Enter some text in the Comments text box (optional). This text will be displayed on the load sheet.
8. Click the Save button.

Deleting vehicle IDs

Click the Delete button to delete a vehicle ID. Note that a vehicle ID will not be deleted if it is currently assigned to a load.

6. Load Schedule Route Maintenance Window

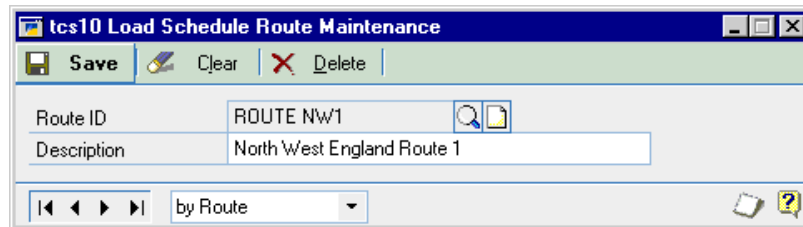


Cards >> Myridas Setup >> Load Planning >> Route Maintenance

Use the Load Schedule Route Maintenance window to:

- Create and edit route descriptions

*The Load
Schedule Route
Maintenance
window*



6.1 Creating and editing route descriptions

To create and edit a route description in the Load Schedule Route Maintenance window:

1. Enter a Route ID or click the lookup to select one from the Route Lookup window.
2. Enter a Route Description.
3. Click the Save button.

*Deleting route
IDs*

Click the Delete button to delete a route ID. Note that a route will not be deleted if it has been assigned to a delivery address.

7. Extra Address Information Maintenance Window - Load Planning Version



Cards >> Sales >> Advanced Distribution >> Extra Address Info.

The Extra Address Information Maintenance window, which is part of the Great Plains Advanced Distribution module, has been modified to include Load Planning functionality. See the Great Plains Advanced Distribution User Guide for Advanced Distribution functionality.

Use the Extra Address Information Maintenance window to:

- Switch Load Planning on for a selected customer and customer address

The Extra Address Information Maintenance window – Load Planning version

Debtor ID	HOMESTORE03	HomeStore, South Kensington
Address ID	PRIMARY	173 Warwick Road
Salesperson ID	PETERS	User Defined 1
Territory ID	UKLONDON	User Defined 2

Load Scheduling:

Include in load schedule Delivery Booking Required

Route: LONDON Drop: 0 Service Level: DAY PLUS 1

Delivery Days:

Sunday Tuesday Thursday Saturday
 Monday Wednesday Friday

Delivery Instructions:

No deliveries before 11 am on Sundays

Note that selecting Additional Info. from the enabled Extras menu when the Debtor Address Maintenance window is open will also open the Extra Address Information Maintenance window.

7.1 Switching Load Planning on for a customer

To switch on Load Planning for a customer in the Extra Address Information Maintenance window:

1. The window will open displaying details of the current customer selection. If required, use the lookups to select an alternative Debtor ID or Address ID.
2. Select the Include in load schedule check box to include the selected address in Load Planning.

3. Select the Delivery Booking Required check box if a booking should be made prior to a delivery.
4. Enter a Route ID or click the lookup to select one from the Route Lookup window. If you enter a new route, you will be asked if you want to create it.
5. Enter a Drop number (optional). Drop numbers are used to sequence the load schedule.
6. Enter a Service Level or click the lookup to select one from the Service Level Lookup window.
7. Under Delivery Days, select check boxes for the days when deliveries can be made. These days will be used to recalculate the ship date.
8. You can use the Days Browse buttons to select days on which deliveries will be made by alternate routes. Browse to the required day then enter the alternate Route ID or select it using the lookup (for example, the standard delivery route may not run on a Sunday, and you are required to deliver by an alternative route on this day). Repeat this as required for other days. You can also enter a Drop number if required.
9. Enter text in the Delivery Instructions text box (optional). This text will be displayed on the load sheet.
10. Click the Save button.

8. Document Delivery Details Window



Sales Transaction Entry window >> Select Delivery Details from the enabled Extras menu

Use the Document Delivery Details window to:

- View and edit Load Planning delivery details for existing documents

The Document Delivery Details window

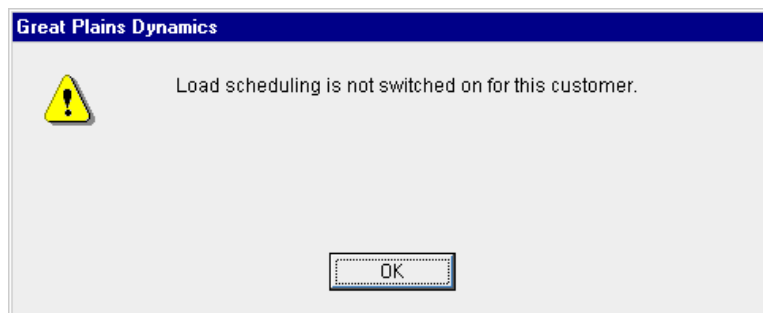
Type	Order	Site ID	WAREHOUSE
Document Number	ORDST1027	Debtor ID	HOMESTORE03
Route	LONDON	Ship To Address	PRIMARY
Drop	0	Service Level	DAY PLUS 1
Number of Parcels	1		
Requested Ship Date	11/01/01		
Booking Details:		Date	10/01/01
		Time	10:00:00
		Reference	BOOK0000117
Booking Comment:			

Warning: Load scheduling overview windows will require refreshing to reflect any changes made here.

OK Omit

The Document Delivery Details window can also be opened from the [Documents Not Assigned To Loads](#) and [Documents Assigned To Loads](#) windows – click the Deliv. Details button.

Note that when creating transactions for customers who have not been assigned to load planning, you will not be able to access the Document Delivery Details window from the Sales Transaction Entry window.



Use the Load Planning version of the [Extra Address Information Maintenance window](#) to switch Load Planning on for a customer.

8.1 Viewing and editing the Load Planning details for a document

To view and edit a document's Load Planning details in the Document Delivery Details window:

1. The window will open displaying details of the document number, route ID, site ID, debtor ID, ship to address and service level. If required, enter an alternative Route ID or click the lookup to select one from the Route Lookup window.
2. Enter the Drop assigned to the document (optional). Drop numbers are used to sequence the load schedule.
3. Enter the Number of Parcels that will make up the delivery (optional).
4. Enter a Requested Ship Date or click the Recalculate button to calculate a ship date which is based on the service level and the customer's assigned delivery days.
5. Enter a Booking Date (optional). This field is for customers who want to book a delivery date, and ensures that a booking is made prior to delivery. When the document is selected in the [Documents Not Assigned To Loads](#) or [Documents Assigned To Loads](#) windows, a warning icon will be displayed informing you that a delivery booking is required and has not yet been made.
6. Enter a Booking Time (optional).
7. Enter a Booking Reference (optional).
8. Enter text in the Booking Comment text box (optional).
9. Click OK to save changes and close the window.

Clicking the Omit button will exclude the selected document from load planning.

9. Documents Not Assigned To Loads Window



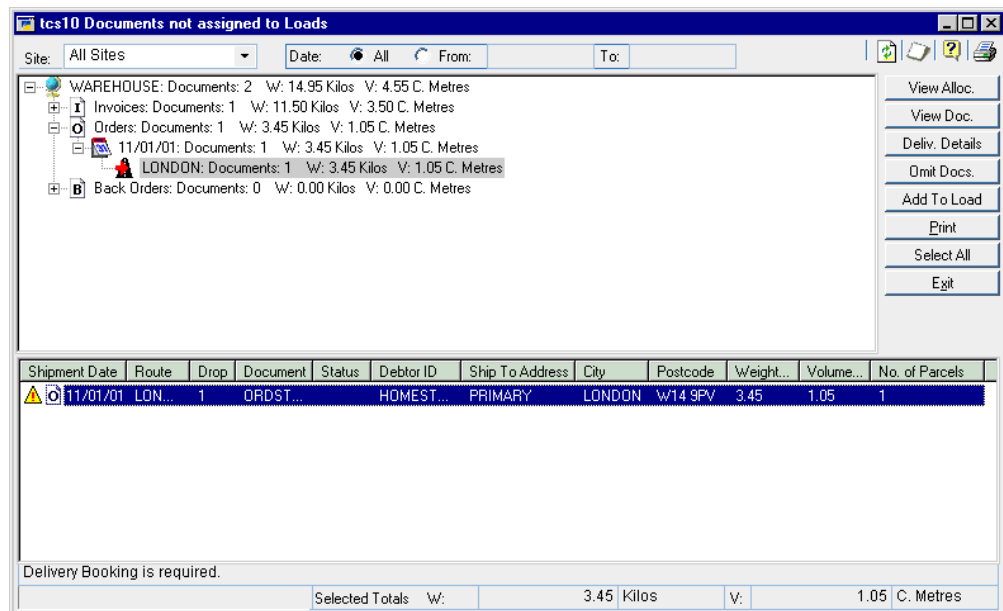
Transactions >> Myridas Transactions >> Load Planning >> Docs. Not On Loads

Use the Documents Not Assigned To Loads window to:

- View the unassigned document load schedule
- Add an invoice to a load
- Amend the delivery details
- Omit a document from Load Planning
- View the sales document
- Print a load schedule

Note that if you are using the Returns Management module then this window will display and allow processing of returns documents as "Collections". It will also display the collection status of returns documents.

*The Documents
Not Assigned
To Loads
window*



9.1 Viewing and processing the unassigned document load schedule

The Documents Not Assigned To Loads window will only display records for customer addresses which have been assigned to load planning. Use the Extra Address Information Maintenance window to switch load planning on for selected customer addresses.

To view and process the unassigned document load schedule in the Documents Not Assigned To Loads window:

1. Select a Site or All Sites from the Site drop-down list. Only sites that have Load planning switched on will be available to select. When you select a site, no other user will be able to maintain the load plan for that site.

2. Enter From and To dates to specify a Date range, or select All to specify all dates.
3. Click the Refresh All button.

All documents matching your site and date criteria will be displayed in the upper half of the window, in a tree view.

The tree view gives a hierarchical view of all documents set up for Load planning that have not been included in a load. Click the + icons to expand branches and the – icons to collapse branches. Each document is divided initially by location (site) and then by document type *i.e.* invoice, order or back order. Each document type is sorted first by date and then by route. The total number of sales documents, total weight and total volume is shown at each level.



Each level has a different icon associated with it. When a level is selected, the icon changes to show a red arrow. When a date or a route is selected, all associated documents are displayed in the lower half of the screen, in the list view. Use the list view to manage your documents.

The list view is divided into twelve columns: Shipment Date, Route, Drop, Document Number, Document Status (see Delivery Logistics), Debtor ID, Ship To Address, City, Postcode, Weight, Volume and Number of parcels. Click a column header to sort the list view in ascending or descending order. Double click a document in the list view to display it in the Sales Transaction Enquiry Zoom window.



The list view icons indicate whether a document is an invoice, order or back order. In addition, if any of the documents require delivery booking, and a booking has not been made, a warning icon will be displayed. Click the icon to display the warning message at the bottom of the window.



The combined weight and volume of any documents selected in the list view will be displayed at the bottom of the Documents Not Assigned To Loads window. This gives you an indication of the total weight and volume that will be added to a load.

4. Use the buttons on the left hand side of the window to perform functions:

To view allocated documents:

- a) Click the View Alloc. button. The Documents Assigned To Loads window will open.

To view more detailed information about a document:

- a) Select a document in the list view.
- b) Click the View Doc. button or double click the document. The Sales Transaction Enquiry Zoom window will open.

To see or edit the Load planning details for a document:

- a) Select a document in the list view.
- b) Click the Deliv. Details button. The Document Delivery Details window will open.

To omit a document from Load planning:

- a) Select a document in the list view.
- b) Click the Omit Docs. button.
- c) Click the Omit button in the information dialog.

Once a document has been omitted from the load system, it will not appear in any of the windows. If you attempt to view the document's delivery details, you will be informed that the document has not been included in the load planning system. Use the [Reinstate Omitted Documents From Load Schedule window](#) to restore the document to load planning.

To add an invoice to a load:

- a) Select an invoice in the list view.
- b) Click the Add To Load button. The [Load Maintenance window](#) will open.

Use standard Windows key combinations to select multiple documents.

To print a load schedule:

- a) Click the Print button. The [Load Schedule Prints window](#) will open.
5. Click the Exit button to close the [Documents Not Assigned To Loads window](#).

Any changes made to the load system such as the creation, movement or amendment of documents will not be reflected in the open Documents Not Allocated To Loads window until the Refresh Data button is clicked.

*Transferring
multiple orders
to invoices*

Use the Multiple Orders to Invoice Transfer window (see Great Plains Advanced Distribution) for the bulk transfer of orders to invoices for specified routes.

10. Load Maintenance Window



Documents Not Assigned To Loads window >> Click the Add To Load button

Use the Load Maintenance window to:

- Create a load
- Assign a document to a load

The Load Maintenance window

Site ID	WAREHOUSE	Main Site
Load Number	WAR	10
Load Date	11/01/01	
Vehicle ID	S473 HDL	<input checked="" type="checkbox"/> Available
Driver	Simon Greene	
Capacity Weight	1,200.00	Kilos
Capacity Volume	15.00	C. Metres
Current Weight	0.00	Kilos
Current Volume	0.00	C. Metres
Available Weight	1,200.00	Kilos
Available Volume	15.00	C. Metres

Document(s) Weight	11.50	Kilos
Document(s) Volume	3.50	C. Metres

10.1 Creating and editing loads

To create or edit a load in the Load Maintenance window:

The window will open displaying details of the current Site ID and Load Number. A Load Number is made up of a code, which cannot be edited, and a number.

1. Select a Load number:

To specify an existing Load number:

- Enter a Load number or click the lookup to select one from the Delivery Load lookup window. The details of the selected load will be displayed in the window.

To specify a new Load number:

- Click the Take next load number button. The next available number will be displayed.
2. Enter a Load Date. The load date will normally be the ship date. However, if multiple despatches with different delivery dates are being sent out in the same load, it may be more useful to enter a despatch or loading date. This date will be used to sort documents in the tree view of the [Documents Assigned To Loads window](#).
 3. Enter or edit the Vehicle ID or click the lookup to select one from the Vehicle Lookup window. If you enter a new Vehicle ID, you will be asked if you want to create it.

The Driver, Capacity Weight and Capacity Volume details associated with the selected Vehicle ID will be displayed.

4. If required, edit the name of the Driver. Note that any changes will only affect this load.
5. If required, edit the Capacity Weight. Note that any changes you make will only affect this load.
6. If required, edit the Capacity Volume. Note that any changes you make will only affect this load.

The capacity weight and volume fields give you the flexibility to force a vehicle to take more than its capacity weight and volume, if required. If a vehicle has been forced over its capacity weight/volume, warnings will be given whenever the load is created or the load sheet is printed.

7. Click the Save button to save the load details.

Deleting load records

Click the Delete button to delete a load record. Note that the record will not be deleted if documents have already been assigned to it.

10.2 Assigning documents to loads

To assign a document to a load in the Load Maintenance window:

1. Enter or select the load details as described in Creating and editing loads.
2. Click the Save button (if you are creating or editing loads).

The load details will be displayed in the window. The Printed check box indicates if the load schedule has been printed, and the Adjusted check box indicates if the load has changed since it was printed. The Available checkbox indicates if the selected vehicle is available.

Current Weight is the total weight already assigned to the load and Current Volume is the total volume already assigned to the load. Available Weight and Available Volume indicate how much more weight and volume can be added to the current load. Document(s) Weight and Document(s) Volume show the combined weight of all documents to be added to this load.

3. All documents to be added to the load are listed in the Documents to add to load list box. Click the Add To Load button to add these documents to the load.

The Load Maintenance window will close and you will be returned to the [Documents Not Assigned To Loads window](#).

11. Documents Assigned To Loads Window



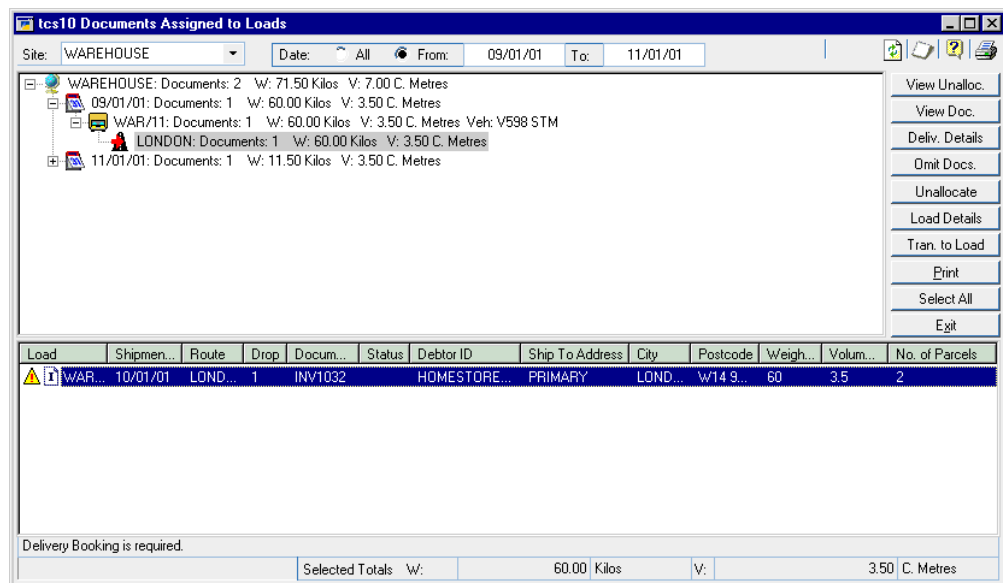
Transactions >> Myridas Transactions >> Load Planning >> Docs. On Loads

Use the Documents Assigned To Loads window to:

- View the assigned document load schedule
- De-allocate a document from a load
- Transfer documents between loads
- Amend the delivery details
- Omit a document from Load planning
- View the sales document
- Print a load schedule

Note that if you are using the Returns Management module then this window will display and allow processing of returns documents as "Collections". It will also display the collection status of returns documents.

*The Documents
Assigned To
Loads window*



11.1 Viewing and processing the assigned document load schedule

To view and process the assigned document load schedule in the Documents Assigned To Loads window:

1. Select a Site or All Sites from the Site drop-down list. Only sites that have Load planning switched on will be available to select. When you select a site, no other user will be able to maintain the load plan for that site.
2. Enter From and To dates to specify a Date range, or select All to specify all dates.
3. Click the Refresh Data button.

All documents matching your site and date criteria will be displayed in the upper half of the window, in a tree view.

The tree view gives a hierarchical view of all allocated documents that have not been omitted from Load planning. Each record is organised initially by site, then by load date, by load and finally by route. The total number of documents, total weight and total volume is shown at each level. Levels can be expanded and collapsed by clicking the + and – icons. Each level is represented by a different icon. When a level is selected, the icon changes to show a red arrow pointing to it. When a load or route is selected, all associated documents are displayed in the lower half of the window in the list view.



The list view is divided into thirteen columns: Load, Shipment Date, Route, Drop, Document No, Document Status (Great Plains Advanced Distribution), Debtor ID, Ship To Address, City, Postcode, Weight, Volume and Number of parcels.

Click a column header to sort the list view in ascending or descending order. Double click a document in the list view to display it in the Sales Transaction Enquiry Zoom window. If a document requires delivery booking and a booking has not been made, a warning icon will be displayed. Click on the icon to display the warning message.



The combined weight and volume of any documents selected in the list view will be displayed at the bottom of the Documents Assigned To Loads window.

5. Use the buttons on the left hand side of the window to perform functions:

To view unallocated documents:

- a) Click the View Unalloc. button.

The [Documents Not Assigned To Loads window](#) will open.

To view more detailed information about a document:

- a) Select a document in the list view.
- b) Click the View Doc. button or double click the document.

The Sales Transaction Enquiry Zoom window will open.

To see or edit the Load planning details for a document:

- a) Select a document in the list view.
- b) Click the Deliv. Details button.

The [Document Delivery Details window](#) will open.

To omit a document from Load planning:

- a) Select a document in the list view.
- b) Click the Omit Docs. button.
- c) Click the Omit button in the information dialog.

To de-allocate a document from a load:

- a) Select a document in the list view.
- b) Click the Unallocate button.
- c) Click the Unallocate button in the information dialog.

To maintain the load header details:

- a) Select a document in the list view.
- b) Click the Load Details button.

The Load Header Maintenance window will open.

To transfer a document to another load:

- a) Select the document in the list view
- b) Click the Tran. to Load button.

The Load Header Maintenance window will open.

To print a load schedule:

- a) Click the Print button. The [Load Schedule Prints window](#) will.
5. Click the Exit button to close the [Documents Assigned To Loads window](#).

12. Load Header Maintenance Window



Documents Assigned To Loads window >> Click the Load Details button or the Tran. to Load button

Use the Load Header Maintenance window to:

- Create and edit loads
- Transfer documents between loads

To create and edit loads, access the Load Header Maintenance window by clicking the Load Details button. To transfer documents between loads, access the Load Header Maintenance window by clicking the Tran. To Load button.

The Load Header Maintenance window

Site ID	WAREHOUSE	Main Site
Load Number	WAR 12	Printed <input type="checkbox"/> Adjusted <input type="checkbox"/>
Load Date	09/01/01	
Vehicle ID	V598 STM	<input checked="" type="checkbox"/> Available
Driver	Tim Cook	Current Weight 0.00 Kilos
Capacity Weight	1,500.00 Kilos	Current Volume 0.00 C. Metres
Capacity Volume	20.00 C. Metres	Available Weight 1,500.00 Kilos
		Available Volume 20.00 C. Metres

Documents To Transfer:

Source Load	WAR 10
Document(s) Weight	11.50 Kilos
Document(s) Volume	3.50 C. Metres

Transfer

12.1 Creating and editing loads

To create and edit loads in the Load Header Maintenance window:

The window will open displaying details of the current Site ID and Load Number. A Load Number is made up of a code, which cannot be edited, and a number.

1. Select a Load number:

To specify an existing Load number:

- Enter a Load number or click the lookup to select one from the Deliveryload lookup window. The details of the selected load will be displayed in the window.

To specify a new Load number:

- Click the Take next load number button. The next available number will be displayed.
2. Enter a Load Date. The load date will normally be the ship date. However, if multiple despatches with different delivery dates are being sent out in the same load, it may be more useful to enter a despatch or loading date. This date will be used to sort documents in the tree view of the Documents Assigned To Loads window.
 3. Enter or edit the Vehicle ID or click the lookup to select one from the Vehicle Lookup window. If you enter a new Vehicle ID, you will be asked if you want to create it.

The Driver, Capacity Weight and Capacity Volume details associated with the selected Vehicle ID will be displayed.

4. If required, edit the name of the Driver. Note that any changes will only affect this load.
5. If required, edit the Capacity Weight. Note that any changes you make will only affect this load.
6. If required, edit the Capacity Volume. Note that any changes you make will only affect this load.
7. Click the Save button to save the load details.

Use the Load Maintenance window to assign a document to a load.

Deleting load records

Click the Delete button to delete a load record. Note that a load will not be deleted if documents have been assigned to it.

12.2 Transferring documents between loads

The transfer functionality in the [Load Header Maintenance window](#) will only be enabled if you open it by clicking the Tran. to Load button in the [Documents Assigned To Loads window](#).

To transfer documents between loads in the Load Header Maintenance window:

1. Enter or select the load details as described in section Creating and editing loads. This will be the destination load.
2. Click the Save button (if you create or edit a load).

All documents to be transferred will be listed in the Documents To Transfer list box. The Load Number of the load you are transferring documents from will be displayed in the Source Load field.

3. Click the Transfer button.

The [Load Header Maintenance window](#) will close and you will be returned to the [Documents Assigned To Loads window](#). Click the Refresh button to update your changes.

13. Reinstate Omitted Document From Load Schedule Window



Transactions >> Myridas Transactions >> Load Planning >> Reinstate Load Docs.

Use the Reinstate Omitted Document From Load Schedule window to:

- Restore an excluded document to the Load planning schedule

The Reinstate Omitted Document From Load Schedule window

Customer Number	Site ID	Ship To Address	Ship Date	Document Type	Document Number	Omit
HOMESTORE03	WAREHOUSE	PRIMARY	11/01/01	Order	ORDST1027	<input checked="" type="checkbox"/>
						<input type="checkbox"/>
						<input type="checkbox"/>
						<input type="checkbox"/>
						<input type="checkbox"/>
						<input type="checkbox"/>
						<input type="checkbox"/>
						<input type="checkbox"/>

13.1 Reinstating omitted documents

Documents can be omitted from load planning in the [Document Delivery Details](#) and [Documents Not Assigned/Assigned To Loads windows](#).

To reinstate an omitted document in the Reinstate Omitted Document From Load Schedule window:

1. The window will open displaying all documents that have been omitted from Load planning. The debtor ID, site ID, ship to address, ship date, document type and document number for each document will be shown.

2. To search for a specific document, click the Find button to open the Find window. Search for a document by document number, requested ship date or site ID.
3. Clear the Omit check box for each document you want to restore to Load planning.
4. Click the Redisplay button to update the display.
5. Click OK to close the window.

14. Load Schedule Purge Window



Routines >> Myridas Routines >> Load Planning >> Load Schedule Purge

Use the Load Schedule Purge window to:

- Remove load records that are older than a specified date
- Remove load records that have not yet been allocated to a load, and have requested ship dates that are older than a specified date
- Remove load records that have been omitted from the load schedule, and have requested ship dates that are older than a specified date

*The Load
Schedule Purge
window*

14.1 Removing load schedule records

To remove load records in the Load Schedule Purge window:

1. Click the lookup to select a Site ID from the Sites window or use the browse buttons to search through the available sites.
2. Click the Purge button.

The Number of days to base purge on value is retrieved from the Days to retain loads field in the [Logistic Control Setup window](#). If load planning details have not been set up in the Logistic Control Setup window, the default value of 30 will be used. The Purge all load schedule records prior to date is a calculated value based on the current date minus the value entered in the Number of days to base purge on field.

While the purge is in progress, a Purge in Progress window will be displayed, showing a progress indicator. All load records older than the specified date will be deleted.

15. Picking Lists and Despatch Notes by Load Window



Transactions >> Myridas Transactions >> Load Planning >> Pick + Desp By Load

Use the Picking Lists and Despatch Notes by Load window to:

- Print picking lists and despatch notes by load

The Picking Lists and Despatch Notes by Load window

15.1 Printing picking lists and despatch notes by load

To print picking lists and despatch notes in the Picking Lists and Despatch Notes by Load window:

1. Enter a Batch to extract selected orders to. This must be the name of a new batch.
2. Enter a Chequebook ID or click the lookup to select one from the Chequebooks window. A Chequebook ID is required to create the batch. If you enter the name of a new Chequebook ID, you will be asked if you want to create it.
3. Enter a Batch Comment to be applied to the batch.
4. Choose to print Picking Lists and Despatch Notes, Despatch Notes Only or Picking Lists Only by selecting the appropriate option button.
5. Click the Sites lookup to select a Site ID or use the browse buttons to search through existing sites.
6. Click the Load lookup to select a Load Number from the Delivery Load Lookup window. This is the Load Number for the selected site for which you want to print picking tickets, despatch notes or both.
7. Click the Extract button to start the extraction of documents to the new batch. The new batch will be passed into the Sales Document Printing window.

16. Load Schedule Prints Window



Transactions >> Myridas Transactions >> Load Planning >> Load Schedule Prints

Use the Load Schedule Prints window to:

- Print load schedules

The Load Schedule Prints window

16.1 Printing load schedules

To print load schedules in the Load Schedule Prints window:

1. Click the Sites lookup to select a Site ID from the Sites window or use the browse buttons to search through available sites.
2. Select the Print allocated or the Print unallocated option button. This specifies whether actual loads (allocated) or documents that have not yet been assigned to loads (unallocated) are printed.
3. Select or clear the Include Item Details check box. If this check box is selected, details will be printed for each item.
4. Select or clear the Print Values check box. If this check box is selected, all item line details will be printed. This option is only available if the Include Item Details check box has been selected.
5. For allocated loads, you can also choose to print adjusted documents, non printed documents or printed documents only, by selecting the appropriate check box. Adjusted documents are documents that have been altered since they were originally printed.
6. Enter From and To dates to specify a Date range, or select All to specify all dates. This specifies the date range of documents to be included.

If you are printing allocated loads, the date is based on the load date. If you are printing unallocated documents, the requested ship date of the document will be used.

7. For allocated loads, enter From and To load numbers or use the lookups to specify a Load Number range, or select All to specify all load numbers. This specifies which load numbers will be included. This is useful if you want to print a driver's load sheet for example.
8. For unallocated documents, enter From and To routes or use the lookups to specify a Route range, or select All to specify all routes. This specifies which routes will be included.
9. Click the Print button and enter your print options in the Report Destination window.

Example of a driver's load sheet

Page Number: 1		The World Online, Inc.		16/11/00	12:24:31
User ID: sa					
Vehicle Details: T583 FJS Tim Cook 2,000.00 Kilos 25.00 C. Metre:		Schedule for Load: <div style="font-size: 1.5em; font-weight: bold;">1 / 8</div> <div style="font-size: 1.2em; font-weight: bold;">WAREHOUSE</div>		Load Totals: Weight 197.00 Kilos Volume 19.50 C. Metres Documents 2	
Route: ROUTELON LONDON					
Drop: 1					
Document	Address		Parcels	Weight	Volume
INV1049	Home Store, South Kensington 173 Warwick Road Kensington London	Del. Details:	2	72.00 Kilos	7.00 C. Metres
W14 9PV					
Tel: 020 58366894		Contact: Tom Gim			
	100XLG		2 Case	\$119.98	
	FAXXERIC-060E		1 Case	\$149.98	
Signature					

Note that if you are using the Returns Management module then collections may appear on driver's load sheets and will be clearly marked as such.

17. Great Plains Advanced Picking with Vehicle Load Planning

Great Plains Advanced Picking provides additional functionality for printing picking lists, such as printing bulk picking lists. The Myridas Vehicle Load Planning module is fully integrated with Advanced Picking to enable you to print picking lists for specified loads.

Using the Advanced Picking Setup window to specify that you want to bulk pick by load, you can produce pick lists for all individual documents attributed to a load.



Use the Bulk Picking Print window to select loads that you want to print picking lists for.

See the Great Plains Advanced Picking User Guide for further details on bulk picking by load.

Appendix A

Access to Myridas Windows

Vehicle Load Planning

Window Name	 Menu Access	 Other Access
Document Delivery Details		Sales Transaction Entry window >> Extras menu >> Delivery Details (once a valid document ID has been selected) Documents Assigned/Not Assigned To Loads windows >> Click the Deliv. Details button
Documents Assigned to Loads	Transactions >> Myridas Transactions >> Load Planning >> Docs. On Loads	
Documents Not Assigned to Loads	Transactions >> Myridas Transactions >> Load Planning >> Docs. Not On Loads	
Extra Address Information Maintenance		
Extra Site Details	Cards >> Myridas Cards >> Load Planning >> Extra Site Details	
Item U of M Load Details	Cards >> Myridas Cards >> Load Planning >> Item U Of M Load Det	Item Maintenance window >> Extras menu >> Load Scheduling (once an item has been selected)
Load Header Maintenance		Documents Assigned to Loads window >> Click the Load Details or Tran. to Loads buttons
Load Maintenance		Documents Not Assigned to Loads window >> Click the

		Add To Load button
Load Schedule Prints	Transactions >> Myridas Transactions >> Load Planning >> Load Schedule Prints	Documents Assigned/Not Assigned to Loads windows >> Click the Print button
Load Schedule Purge	Routines >> Myridas Routines >> Load Planning >> Load Schedule Purge	
Load Schedule Route Maintenance	Cards >> Myridas Setup >> Load Planning >> Route Maintenance	
Logistic Control Setup	Setup >> Advanced Distribution >> Logistic Cont. Setup	
Picking Lists and Despatch Notes by Load	Transactions >> Myridas Transactions >> Load Planning >> Pick + Desp by Load	
Reinstate Omitted Document from Load Schedule	Transactions >> Myridas Transactions >> Load Planning >> Reinstate Load Docs.	
Service Level Maintenance	Cards >> Myridas Setup >> Load Planning >> Service Level Maint.	
Vehicle Maintenance	Cards >> Myridas Setup >> Load Planning >> Vehicle Maintenance	Load Maintenance window >> Click the Vehicle ID zoom

Appendix B

Modified Great Plains Windows

Some Great Plains windows have been modified to incorporate Myridas behaviour:

Great Plains Window Name	Series	Myridas Module	Modification
Sales Transaction Entry	Sales	Vehicle Load Planning	Underlying functionality enables load planning information to be incorporated into sales transactions

Appendix C

Myridas Reports

Myridas provides multiple reports to increase information visibility.

Report Name	Module	Functionality
Load Schedule report	Load Planning	Prints out load schedules (or documents not yet assigned to load schedules) based on the range selected in the Load Scheduling Prints window

Index

- A**
- Advanced Picking 30
 - Assigning
 - documents to loads 21
 - weights and volumes to items 11
- B**
- Booking date 16
 - Bulk picking lists 30
- C**
- Creating
 - loads 20, 25
 - routes 13
 - service levels 10
 - vehicle details 12
- D**
- De-allocating documents from loads .. 23
 - Deleting
 - load records 21, 25
 - routes 13
 - service levels 10
 - site details 9
 - vehicle details 12
 - Document Delivery Details window .. 15
 - Documents Assigned To Loads window
 - 22
 - list view 23
 - tree view 23
 - Documents Not Assigned To Loads
 - window 17
 - list view 18
 - tree view 18
 - Drop numbers 15, 16
- E**
- Extra Address Information Maintenance
 - window
 - Load planning version 14
 - Extra Site Details window 9
- I**
- Item U of M Load Details window 11
- L**
- Load date 25
 - Load Header Maintenance window 24
 - Load Maintenance window 20
 - Load numbers 9, 20
 - Load planning 6
 - booking date 16
 - creating loads 20
 - de-allocating documents 23
 - drop numbers 15
 - load date 25
 - load numbers 9
 - number of parcels 16
 - omit documents 16, 19
 - purging load records 27
 - reinstating documents 26
 - routes 6
 - service levels 6, 10
 - switching it on for a customer 14
 - transferring documents between loads
 - 24, 25
 - transferring multiple orders to
 - invoices for specific routes 19
 - vehicle details 6
- Load records
 - deleting 21
- Load Schedule Prints window 29
- Load Schedule Purge window 27
- Load Schedule Route Maintenance
 - window 13
- Load schedules
 - printing 29
- Loads
 - creating 20
- Logistic Control Setup window
 - Load planning version 8
- O**
- Omit documents 16, 19
- P**
- Picking Lists and Despatch Notes by
 - Load window 28
 - Printing
 - load schedules 29
 - picking lists and despatch notes 28
 - picking lists by load 30
 - Purging
 - load records 27
- R**
- Reinstate Omitted Document From Load
 - Schedule window 26
 - Reinstating
 - documents to load planning 26
 - Routes 6
 - creating 13
 - deleting 13

S			
Service Level Maintenance window...	10		
Service levels	6, 10		
creating	10		
deleting	10		
Site details			
deleting	9		
System volume unit	8		
System weight unit	8		
T			
Transferring			
		documents between loads	24, 25
		V	
		Vehicle details.....	6
		creating	12
		deleting	12
		Vehicle Maintenance window.....	12
		Viewing	
		the load schedule.....	22
		Volume	8, 11
		W	
		Weight	8, 11