

*myridas*TM *User Guide*

Version 7.6 for Great Plains 7.5

Extended Pricing Enhancements



Trinity Computer Services Limited

May 2003

Contents

CONTENTS	2
USING THIS GUIDE	3
ABOUT MYRIDAS	4
EXTENDED PRICING ENHANCEMENTS	5
1. SETTING UP COST UPLIFT PRICES	6
2. HOW COST UPLIFT PRICES ARE CALCULATED.....	7
3. MYRIDAS PROMOTIONS.....	8
4. EXTENDED PRICING EXTRAS SETUP WINDOW	9
4.1 <i>Setting Defaults for Extended Pricing Enhancements</i>	9
5. AVAILABLE PROMOTIONS INFORMATION WINDOW	10
5.1 <i>Viewing Promotions for Sales Items</i>	10
APPENDIX A	11
ACCESS TO MYRIDAS WINDOWS.....	11
<i>Extended Pricing Enhancements</i>	11
APPENDIX B	12
AMENDED GREAT PLAINS WINDOWS	12
INDEX	13

Using this Guide

The graphics in this document are best viewed or printed with Adobe Acrobat Reader version 4.0 or above.

This guide provides user notes for the Myridas Extended Pricing Enhancements module:

- Extended Pricing Enhancements



The mouse symbol has been used throughout the manual to help guide you to the location of windows in the software. See [Appendix A](#) for a list of Myridas windows and their location in the software.

A full range of tutorials is also available on our website, <http://www.trinitypartner.com>.

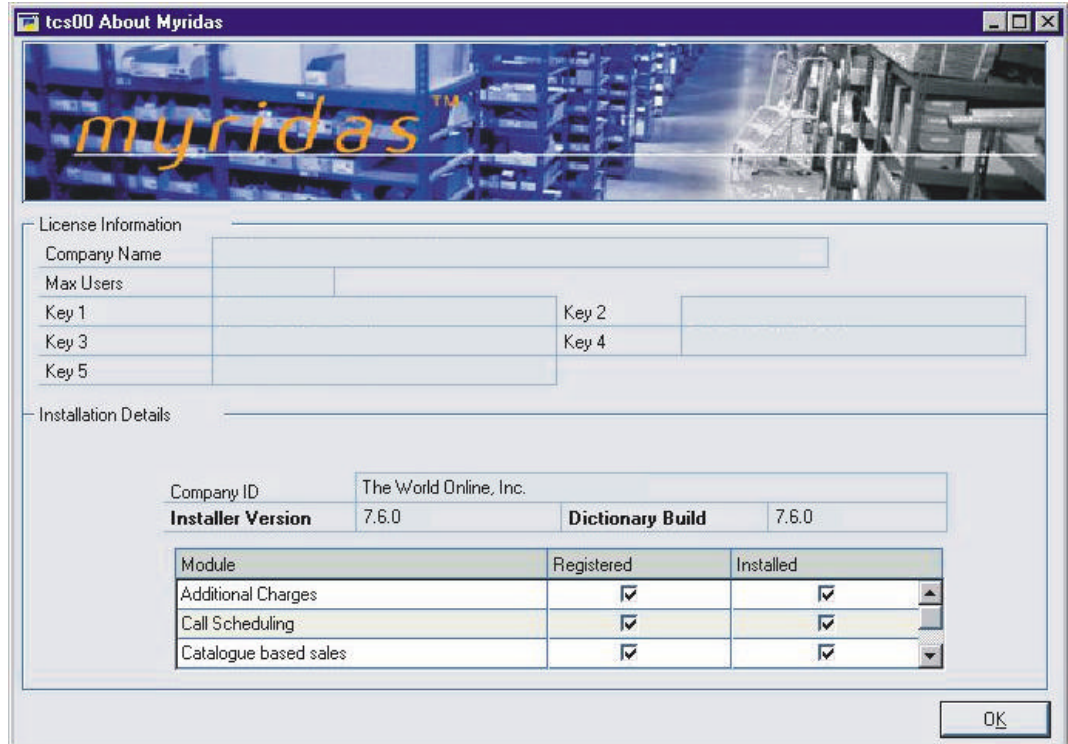
About Myridas



Cards >> Myridas Setup >> About Myridas

Use the About Myridas window to check your license information and installation details. The window will tell you which Myridas modules you are registered to use and which have been installed on your system.

The About Myridas window



Extended Pricing Enhancements

The Myridas Extended Pricing module provides additional functionality for Great Plains Extended Pricing.

The key features of the Extended Pricing Enhancement module are:

- The facility to set up and use cost uplift prices
- New promotion information window providing increased information during sales transaction entry
- A new calculation for quantity free promotions

The Myridas Extended Pricing Enhancements module is fully integrated with Great Plains Extended Pricing. Please see [Appendix B](#) for full details of enhancements to specific Extended Pricing windows.

If you are using the Myridas Extended Pricing Data Import module then cost uplift prices can be imported from an excel spreadsheet. See the Extended Pricing Data Import user guide for further details.

1. Setting Up Cost Uplift Prices

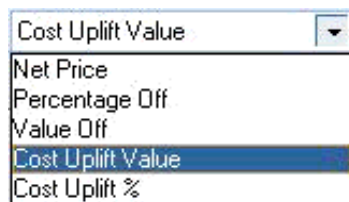
Cost uplift pricing is when a selling price for sales transactions is calculated by adding a value or percentage to the unit cost price. New, mainly underlying, functionality allows you to create cost uplift prices using the Great Plains Extended Pricing windows.

To enable cost uplift pricing functionality you need to select the Cost Uplift Pricing option in the [Extended Pricing Extras Setup window](#). When you select this option for the first time and close the window, a new price book - the BASECOSTBOOK - is created automatically. This price book is used as the basis for cost uplift pricing and follows the same rules as the Great Plains base price book (BASEBOOK).

Prices are not automatically added to the base cost book. To utilise cost uplift pricing you should set up one or more base price sheets and assign them to the base cost book. Add items to price sheets in the Great Plains Price Sheet Maintenance window. You must select the Net Price Only option in this window - only net price sheets can be assigned to the base cost book.

When net prices for the required items have been assigned to the base cost book you should set up one or more cost uplift price sheets for the items. The Great Plains Price Sheet Detail Maintenance window has been amended to include two new price type options, cost uplift value and cost uplift percentage.

Cost uplift options



Select one of the cost uplift options when creating a cost uplift price sheet. By default the base cost price book (BASECOSTBOOK) will be selected as the Base Adjusted Price on option. In the Cost Uplift Value field in the scrolling window enter the value or percentage that you want the cost price to be uplifted by in sales transactions. The adjusted price (list price + cost uplift value/percentage) will be displayed automatically. All other functionality within the window remains the same as with standard Great Plains.

When a cost uplift sheet has been set up it should be assigned to a suitable debtor or price book. A cost uplift sheet cannot be assigned to the base cost book, as it does not contain net only prices.

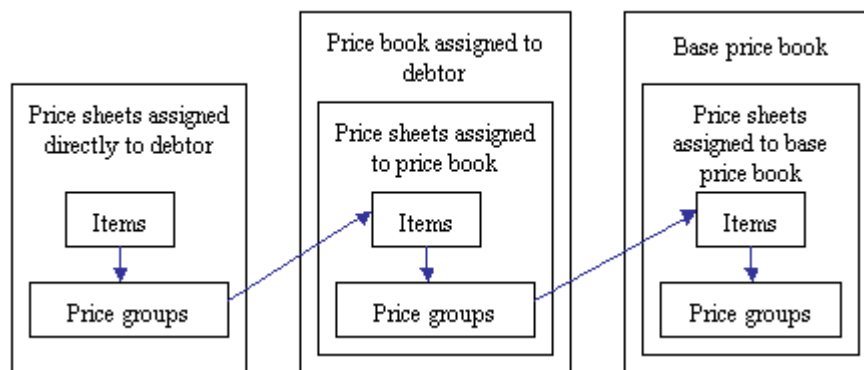
2. How Cost Uplift Prices are Calculated

The system searches for cost uplift pricing information in the same way it searches for other price type information but only to book level.

Once a cost uplift price type is found, the cost uplift percentage or value uplift is applied to the base cost book. If the price is found at sheet level it still goes straight to the base cost book to calculate the price and does not apply any other level price calculations. If no price is found on the base cost book then an error is given.

If a cost uplift price is found then the adjusted price will be brought into the sales transaction. The system will be searched for any applicable promotion sheets. If a promotion sheet is found then the cost uplift adjusted price will be amended to take account of any promotional pricing.

Refer to the illustration for more information.



3. Myridas Promotions

To enable Myridas promotions functionality you need to select the Promotion Details options in the [Extended Pricing Extras Setup window](#).

Available Promotions Window option

Selecting this option will provide additional functionality when entering sales transactions.

With standard Great Plains the Promotion Alert window is displayed only after the quantity of an item required to meet a promotion has been entered into the transaction. If the quantity entered is less than that required to meet the promotion then the user will not know that by increasing the order a promotion would have been available.

With the Available Promotions Window option enabled, when an item on a promotional price sheet is selected in a sales transaction the [Available Promotions Information window](#) will be displayed. This provides the user with full details of promotions that the item is eligible for.

Alternative Quantity Free Calculation

Great Plains quantity free promotions allow you to create giveaway promotions. For example, you can create promotions that give away different quantities of free items depending on the quantity of an item purchased by the customer.

Myridas functionality provides an alternate calculation for working out the quantity of free items that should be given. For example, you could set up a promotional price sheet like this:

Purchase Quantity	Quantity of free items
0 to 1	0
2 to 9	5
10 to 100	15
100 to 999999999	25

If a purchase quantity of 50 were entered into a transaction then standard Great Plains would calculate a quantity of 750 free items (purchase quantity (50) x quantity free (15)).

With the Myridas alternate free quantity calculation, if a purchase quantity of 50 were entered into a transaction the free quantity calculated would be 75 (purchase quantity (50) / quantity from (10) x quantity free (15)).

4. Extended Pricing Extras Setup window

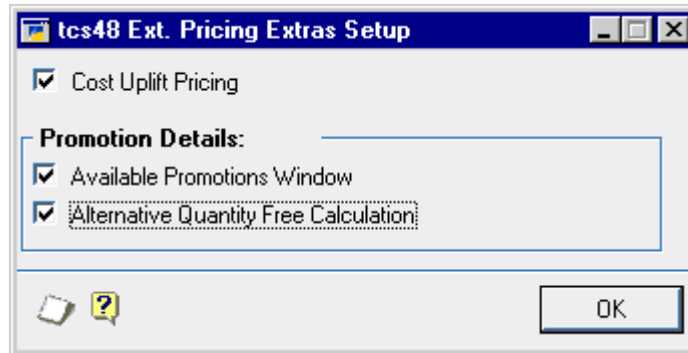


Cards >> Myridas Setup >> Ext. Prc. Enhancements>> Ext. Prc. Enh. Setup

Use the Extended Pricing Extras Setup window to:

- Set defaults for extended pricing enhancements

The Extended Pricing Extras Setup window



4.1 Setting Defaults for Extended Pricing Enhancements

To set defaults for extended pricing enhancements in the Extended Pricing Extras Setup window:

1. Three settings are available in the window:

Cost Uplift Pricing	Enables you to calculate a selling price by adding a percentage or value to the cost price. See Setting Up Cost Uplift Prices .
Available Promotions Window	If a promotion exists for an item that is selected for a sales transaction then the Available Promotions Info window will be displayed. See Myridas Promotions .
Alternate Quantity Free Calculation	Quantity free calculations will follow the Myridas calculation for working out free quantities rather than the Great Plains calculation. See Myridas Promotions .

Click to select the required options.

2. Click OK to close the window.

Note that if you selected the Cost Uplift Pricing option then the base cost book - called BASECOSTBOOK - will be created automatically.

5. Available Promotions Information window



Transactions >> Sales >> Sales Trn. Entry >> Enter an item on a current promotion sheet

Use the Available Promotions Information window to:

- View promotions for sales items

The Available Promotions Information window

U of M	From Qty	To Qty	Promotion Type
Scheme Code	Start Date	End Date	Value
Free Item			U of M
Each	1	1	Quantity Free
PROMSH1	01/01/03	31/12/03	1
24X IDE			Each
Each	2	999,999,999,999	Quantity Free
PROMSH1	01/01/03	31/12/03	2
24X IDE			Each

OK

5.1 Viewing Promotions for Sales Items



To view promotions for sales items in the Available Promotions Information window:

1. The window will open automatically when you enter an item into a sales transaction that is on a current promotional price sheet.
2. When you have viewed available promotion details click OK to close the window.

Appendix A

Access to Myridas Windows

Extended Pricing Enhancements

Window Name	 Menu Access	 Other Access
Extended Pricing Extras Setup	Cards >> Myridas Setup >> Ext. Prc. Enhancements>> Ext. Prc. Enh. Setup	
Available Promotions Information		Transactions >> Sales >> Sales Trn. Entry >> Enter an item on a current promotion sheet

Appendix B

Amended Great Plains Windows

Multiple Great Plains Extended Pricing windows have been amended to provide increased functionality.

Window Name	Amended Functionality
Price Book Maintenance	BASECOSTBOOK cannot be deleted or assigned non-net only price sheets
Price Sheet Maintenance	A price sheet on the BASECOSTBOOK cannot be amended to non-net only
Price Sheet Assignment	Only net price only sheets can be added to the BASECOSTBOOK
Price Sheet Assignment Ranges	Only net price only sheets can be added to the BASECOSTBOOK
Price Sheet Detail Maintenance	Option to select cost uplift value or cost uplift % <ul style="list-style-type: none"> • If cost uplifts options are selected: • The base adjusted price on will be set to base book • List price will be drawn from the BASECOSTBOOK • Adjusted price will be calculated on entry of values
Price Sheet Enquiry	Includes enquiries on cost uplift sheets
Item Price Sheet Enquiry	Includes enquiries on cost uplift sheets
Price Trace Enquiry	Includes enquiries on cost uplift sheets
Promotion Price Sheet Enquiry	Includes enquiries on cost uplift sheets
Debtor Pricing Maintenance	Debtors cannot be assigned the BASECOSTBOOK
Prospect Pricing Maintenance	Prospects cannot be assigned the BASECOSTBOOK

Index

A

- Alternate quantity free calculation 8
- Available Promotions Information
 - window 10
- Available promotions window option .. 8

B

- Base cost book 6

C

- Calculating cost uplift prices 7
- Cost uplift options 6
- Cost uplift prices in sales transactions.. 7

E

- Extended Pricing Enhancements 5

- setting defaults9

- Extended Pricing Extras Setup window 9

P

- Price Sheet Detail Maintenance window
 - 6
- Promotions 8
 - viewing in transactions 10

Q

- Quantity free 8

S

- Setting up cost uplift prices..... 6

V

- Viewing promotions for sales items.... 10