

*myridas*TM *User Guide*

Version 7.6 for Great Plains 7.5

Extended Pricing Data Import



Trinity Computer Services Limited

May 2003

Contents

CONTENTS 2

USING THIS GUIDE..... 3

ABOUT MYRIDAS..... 4

EXTENDED PRICING DATA IMPORT 5

 1. IMPORT PRICING WINDOW 6

 1.1 *Importing Pricing Data*..... 6

 1.2 *Flatfile Settings* 8

 1.3 *Flatfile Formatting* 12

APPENDIX A..... 15

 ACCESS TO MYRIDAS WINDOWS..... 15

Extended Pricing Data Import..... 15

APPENDIX B..... 16

 MYRIDAS REPORTS 16

INDEX 17

Using this Guide

The graphics in this document are best viewed or printed with Adobe Acrobat Reader version 4.0 or above.

This guide provides user notes for the Myridas Extended Pricing Data Import module:

- Extended Pricing Data Import



The mouse symbol has been used throughout the manual to help guide you to the location of windows in the software. See [Appendix A](#) for a list of Myridas windows and their location in the software.

A full range of tutorials is also available on our website, <http://www.trinitypartner.com>.

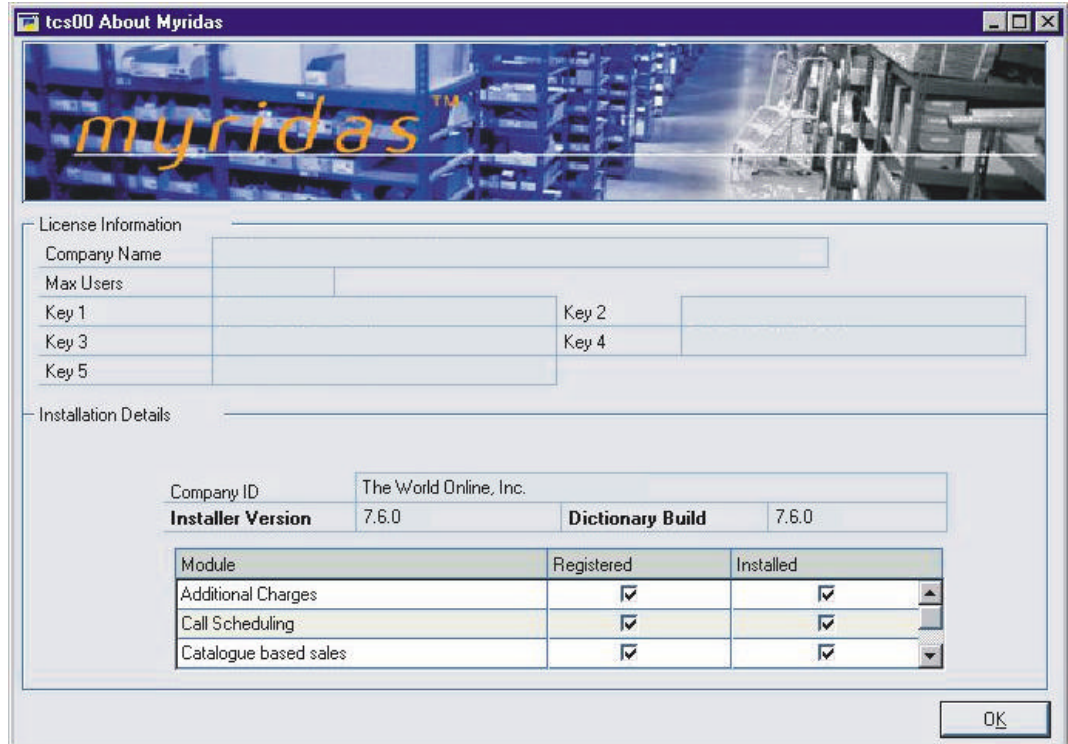
About Myridas



Cards >> Myridas Setup >> About Myridas

Use the About Myridas window to check your license information and installation details. The window will tell you which Myridas modules you are registered to use and which have been installed on your system.

The About Myridas window



Extended Pricing Data Import

Great Plains Extended Pricing provides an alternative to the standard Great Plains pricing, giving you the facility to set up flexible pricing structures and customised pricing arrangements through price sheets, price books and price groups.

The Myridas Extended Pricing Data Import module increases the functionality of Great Plains Extended Pricing by allowing you to import data from outside Great Plains. For example, you may wish to transfer pricing structures from an existing system into Great Plains. The Extended Pricing Data Import module enables you to retain the integrity of any pricing data that you have set up externally to Great Plains by importing data from flatfiles (.csv files) that could be created, for example, in Excel.

The main features of the Extended Pricing Data Import module are:

- The facility to import pricing data into Great Plains to create price sheets and price books
- The facility to import pricing data into Great Plains to assign price sheets to price books
- The facility to import pricing data into Great Plains to assign price sheets and price books to debtors and prospects
- The facility to import pricing data into Great Plains to assign items and groups to price sheets

Before you attempt to utilise the Extended Pricing Data Import functionality it is recommended that you refer to the [Flatfile Settings](#) and [Flatfile Formatting](#) sections.

1. Import Pricing window

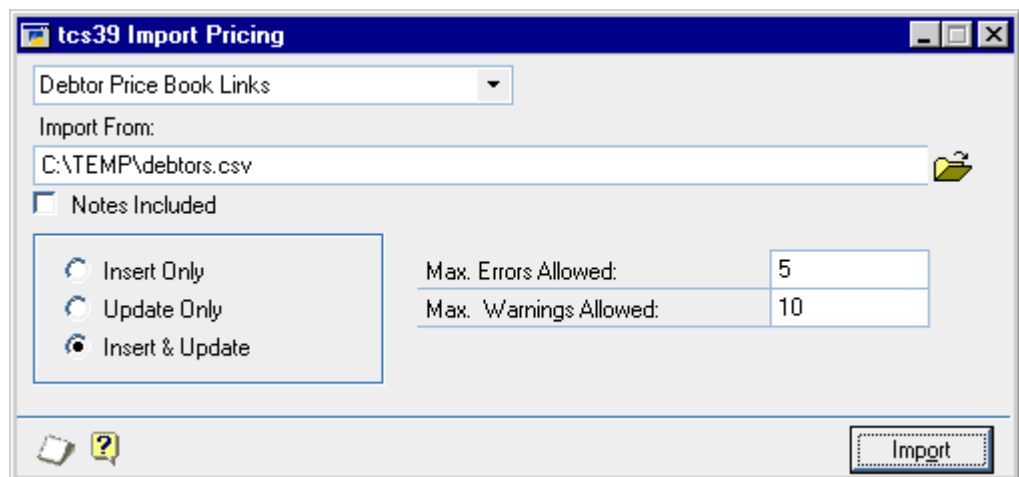


Routines >> Myridas Routines >> Pricing Data Import >> Import Pricing

Use the Import Pricing window to:

- Import pricing data into Great Plains to create price sheets and price books
- Import pricing data into Great Plains to assign price sheets to price books
- Import pricing data into Great Plains to assign price sheets and price books to debtors and prospects
- Import pricing data into Great Plains to assign items and groups to price sheets

The Import Pricing window



1.1 Importing Pricing Data

To import pricing data in the Import Pricing window:

1. Select the pricing data type that you want to import from the drop down menu. See Flatfile Settings (1.2) for further details of import types.

Note that the import you select must be validated by Great Plains. For example, you cannot assign a price sheet to a price book, where you have not already created the price sheet, either through import data or Great Plains Extended Pricing functionality.

2. Enter the file that you want to import or use the Folder icon to browse to the required .csv file on your system.
3. You can select to include notes with the imported .csv file by clicking the Notes Included check box.

Note that this option is only available for certain import types, see Flatfile Settings (1.2) for further details of imports where notes may be included.

4. Click to select whether to Insert Only, Update Only or Insert and Update the data on the imported .csv file. These options identify the import routine that you want to perform. For example, if you select Insert Only then new records (such as a new price sheet, or the new assignment of a price sheet to a debtor)

will be imported. Existing records (such as a price sheet that already exists on your system) would not be imported and would result in an error.

Option	New Record	Existing Record
Insert Only	Updated	Produce error
Update Only	Produce error	Updated
Insert and Update	Updated	Updated

- Under Max. Errors Allowed enter the maximum number of errors that you want to be permitted before the import is stopped.

Errors result when the import cannot validate data in a .csv file. This could be where the formatting of a field is wrong (see 1.3) or where incorrect values have been entered (for example an invalid item number is contained in the file for import). Any errors detected in the import will be displayed in the errors report (see below). Records containing errors **will not** be imported.

If you set a value in Max. Errors Allowed and that value is reached during the import then the import will be stopped. All records up to that point **will** be imported.

Note that if no quantity is entered then the import will be processed regardless of the quantity of errors.

- Under Max. Warnings Allowed enter the maximum number of warnings that you want to be permitted before the import is stopped.

Warnings result when the import finds records that can be imported but may result in problematic data, for example, where the net price is set to zero. Any warnings detected in the import will be displayed in the errors report (see below). Records containing warnings **will** be imported.

If you set a value in Max. Warnings Allowed and that value is reached during the import then the import will be stopped. All records up to that point **will** be imported.

Note that if no quantity is entered then the import will be processed regardless of the quantity of warnings.

- Click Import to import the selected .csv file.

Note that you will receive an automatic warning if you attempt to import a flatfile with an incorrect number of fields.

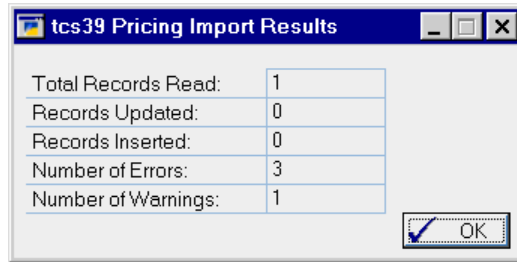
If there are errors in the import then a dialogue box will be displayed with the option to print an errors report. To print an errors report click Yes.

Sample Errors Report

System:	30/05/02 15:44:50	The World Online, Inc.	Page:	1
User Date:	30/05/02	PRICE IMPORT - PRICE SHEET ITEM/GROUP ERRORS	User ID:	sa
Price Sheet Code	Item Number	U of M	Free Item	Error
BASEBOOK	100XLO	EACH		Price Sheet Not Found.
BASEBOOK	100XLO	EACH		Price sheet header must be flagged as net price
BASEBOOK	100XLO	EACH		Warning - Zero price entered for Base Price

- When the import has been processed the Pricing Import Results window will be displayed. Details of the records imported will be displayed along with details of errors and warnings encountered.

The Pricing Import Results window



- Click OK to close the Pricing Import Results window.

1.2 Flatfile Settings

The import process requires that the exact number of fields are present in the csv file that you are importing. If an incorrect number are present then this will be detected by the import and a warning will be given. The import will not be processed until you amend the .csv file or the import type that you have selected.

The fields required in flatfiles to import are dependent upon the type option that you select in the Import Pricing window. For example, if you select to import Price Book Headers then the .csv file should contain the fields Price Book Code, Price Book Description and the optional field Notes (if you want to import notes you would need to select the Notes Included option - see 1.1).

Sample .csv file

Price Book Code	Price Book Description	Notes
NEWPRICES	New price book	Notes (optional)

Full details of the fields required for each import type are displayed in the table below. Note that each field requires specific formatting to be in place for the import to function - see 17.1.3 for further details.

Flatfile settings

Import Type	Action	Required Fields
Price Book Headers	Create Price Book	Price Book Code Price Book Description Notes (optional)
Debtor Price Book Links	Assign Price Book to Debtor	Price Book Code Debtor Code

Prospect Price Book Links	Assign Price Book to Prospect	Price Book Code Prospect Code
Price Sheet Headers	Create Price Sheet	Price Sheet Code Price Sheet Description Base Sheet Net Price Only Active Flag Start Date End Date Currency ID (if the company/system is multi-currency) Notes (optional)
Promotion Price Sheet Headers	Create Promotional Price Sheet	Price Sheet Code Price Sheet Description Base Sheet Net Price Only Active Flag Start Date End Date Currency ID (if the company/system is multi-currency) Notes (optional)
Price Sheet Price Book Links	Assign Price Sheet to a Price Book	Price Sheet Code Price Book Code
Price Sheet Debtor Links	Assign Price Sheet to Debtor	Price Sheet Code Debtor Code
Price Sheet Prospect Links	Assign Price Sheet to Prospect	Price Sheet Code Prospect Code
Base Price Sheet Items	Assign Item to Base Price Sheet	Price Sheet Code Item Number Unit of Measure Breakpoint Pricing From Qty To Qty

		Net Price
Base Cost Sheet Items	Assign Item to Base Cost Sheet	Price Sheet Code Item Number Unit of Measure Breakpoint Pricing From Qty To Qty Net Price
Base Price Sheet Groups	Assign Groups to Base Price Sheet	Cost Sheet Code Group Code Unit of Measure Breakpoint Pricing From Qty To Qty Net Price
Base Cost Sheet Groups	Assign Groups to Base Cost Sheet	Cost Sheet Code Group Code Unit of Measure Breakpoint Pricing From Qty To Qty Net Price
Non-Base Price Sheet Items	Assign Items to Price Sheet	Price Sheet Code Item Number Unit of Measure Breakpoint Pricing From Qty To Qty Price Type Value
Non-Base Price Sheet Groups	Assign Groups to Price Sheet	Price Sheet Code Group Code Unit of Measure Breakpoint Pricing

		From Qty To Qty Price Type Value
Base Price Promotion Items	Assign Items to Base Promotion Sheet	Price Sheet Code Item Number Unit of Measure Breakpoint Pricing From Qty To Qty Price Type Value
Base Price Promotion Groups	Assign Groups to Base Promotion Sheet	Price Sheet Code Group Code Unit of Measure Breakpoint Pricing From Qty To Qty Price Type Value
Non-Base Promotion Items	Assign Items to Promotion Sheet	Price Sheet Code Item Number Unit of Measure Breakpoint Pricing From Qty To Qty Price/Promotion Type Value Promotional Level
Non-Base Promotion Groups	Assign Groups to Promotion Sheet	Price Sheet Code Group Code Unit of Measure Breakpoint Pricing From Qty

		To Qty Price/Promotion Type Value Promotional Level
Qty Free Promotion Items	Assign Items as Free Promotions to a Price Sheet	Price Sheet Code Item Number Unit of Measure From Qty To Qty Qty Free Promotion Level Free Item Number Free Item Unit of Measure
Qty Free Promotion Groups	Assign Groups as Free Promotions to a Price Sheet	Price Sheet Code Group Code Unit of Measure From Qty To Qty Qty Free Promotion Level Free Item Number Free Item Unit of Measure

1.3 Flatfile Formatting

The Extended Pricing Data Import module requires specific formatting to be applied to flatfiles to enable imports to be performed. The correct number of fields must be present for the type of import selected. If there is an incorrect number of fields then you will receive a warning and the import will not be processed.

Errors will be registered where the entry or formatting of the field is incorrect, or where the entry exceeds the specified numbers of characters.

Date fields must be formatted to the specification below or an error will be registered.

A field requiring a Char entry can be any alphanumeric combination. Fields with the length 19,5 represent quantity values. The primary value (e.g.: pounds

sterling) may be up to 19 numeric characters long, the secondary value (e.g.: pence) may be up to five characters long.

If you set breakpoint pricing to **N** you should enter values of 0.



Field	Entry Formatting	Length	Example
Active Flag	Y or N (uppercase)	1	Y
Base Sheet	Y or N (uppercase)	1	Y
Breakpoint Pricing	Y or N (uppercase)	1	Y
Currency ID	Char	15	Z-US\$
Debtor Code	Char	15	ABLE001
End Date	DD/MM/YYYY	8	18/01/2002
Free Item Number	Char	15	100XLG
Free Item Unit of Measure	Char	8	EACH
From Qty	Numeric	19,5	240,05
Group Code	Char	30	PROMO
Item Number	Char	30	100XLG
Net Price	Numeric	19,5	240,05
Net Price Only	Y or N (uppercase)	1	Y
Notes	Text	200	Optional
Price Book Code	Char	15	BASEBOOK
Price Book Description	Char	50	Base prices
Price Type	N - Net Price P - Percentage Off V - Value Off U - Cost Uplift Value T - Cost Uplift Percent	1	N

Price/Promotion Type	N - Net Price P - Percentage Off V - Value Off Q - Quantity Type	1	N
Promotion Level	S - Sheet C - Customer Book B - Base Book	1	S
Prospect code	Char	15	ABLE001
Start Date	DD/MM/YYYY	8	18/01/2002
To Quantity	Numeric	19,5	240,05
Unit of Measure	Char	8	EACH
Value	Numeric	19,5	240,05

Appendix A

Access to Myridas Windows

Extended Pricing Data Import

Window Name	 Menu Access	 Other Access
Import Pricing	Routines >> Myridas Routines >> Pricing Data Import >> Import Pricing	

Appendix B

Myridas Reports

Myridas provides multiple reports to increase information visibility.

Report Name	Module	Functionality
Import Pricing Errors report	Extended Pricing Data Import	Prints a report on all errors and warnings encountered during a pricing import

Index

E

Errors Report 8

F

Flatfile Formatting 12

Flatfile Settings 8

Formatting

flatfiles for pricing data import 12

I

Import Pricing window 6

Importing

Pricing Data 6

P

Pricing Data Import 5

Pricing Import Results window 8

S

Setting up

flatfiles for pricing data import 8