

# *myridas*<sup>TM</sup> *User Guide*

Version 10.0 for Microsoft Dynamics™ GP 10.0

## **Item Life Cycle**

Trinity Computer Services Limited

September 2007

# Contents

<b>CONTENTS .....</b>	<b>2</b>
<b>USING THIS GUIDE .....</b>	<b>3</b>
<b>ABOUT MYRIDAS .....</b>	<b>4</b>
<b>ITEM LIFE CYCLE .....</b>	<b>5</b>
1. STATUS CODE MAINTENANCE WINDOW .....	6
1.1 <i>Creating and Editing Status Codes</i> .....	6
2. ITEM STATUS CODE ALLOCATION WINDOW .....	7
2.1 <i>Allocating Status Codes to Multiple Items</i> .....	7
3. ITEM STATUS CODE ALLOCATION RANGES WINDOW .....	8
3.1 <i>Assigning Ranges of Items to a Status Code</i> .....	9
4. ASSIGN STATUS CODE TO ITEM NUMBER WINDOW .....	10
4.1 <i>Assigning a Status Code to an Individual Item</i> .....	10
5. SALES TRANSACTIONS – ITEM LIFE CYCLE VERSION .....	11
5.1 <i>“Do Not Sell” Items</i> .....	12
5.2 <i>“Sell Only When In Stock” Items – Sales Orders, Invoices and Back Orders</i> ....	12
5.3 <i>“Sell Only When In Stock” Items – Quotations</i> .....	13
5.4 <i>Transferring Quotations to Sales Orders/Invoices</i> .....	14
6. PURCHASE TRANSACTIONS – ITEM LIFE CYCLE VERSION .....	15
6.1 <i>“Purchase Not Allowed”</i> .....	16
6.2 <i>Purchase Order Generation with the Item Life Cycle Module</i> .....	17
7. ITEMS WINDOW – ITEM LIFE CYCLE VERSION .....	18
<b>APPENDIX A.....</b>	<b>19</b>
ACCESS TO MYRIDAS WINDOWS.....	19
<i>Item Life Cycle</i> .....	19
<b>APPENDIX B.....</b>	<b>20</b>
ALTERNATE MICROSOFT DYNAMICS™ GP WINDOWS.....	20
<b>INDEX .....</b>	<b>21</b>

## Using this Guide

The graphics in this document are best viewed or printed with Adobe Acrobat Reader version 4.0 or above.

This guide provides user notes for the Myridas Item Life Cycle module:

- Item Life Cycle



The mouse symbol has been used throughout the manual to help guide you to the location of windows in the software. See [Appendix A](#) for a list of Myridas windows and their location in the software.

A full range of tutorials is also available on our website, <http://www.trinitypartner.com>.

# About Myridas

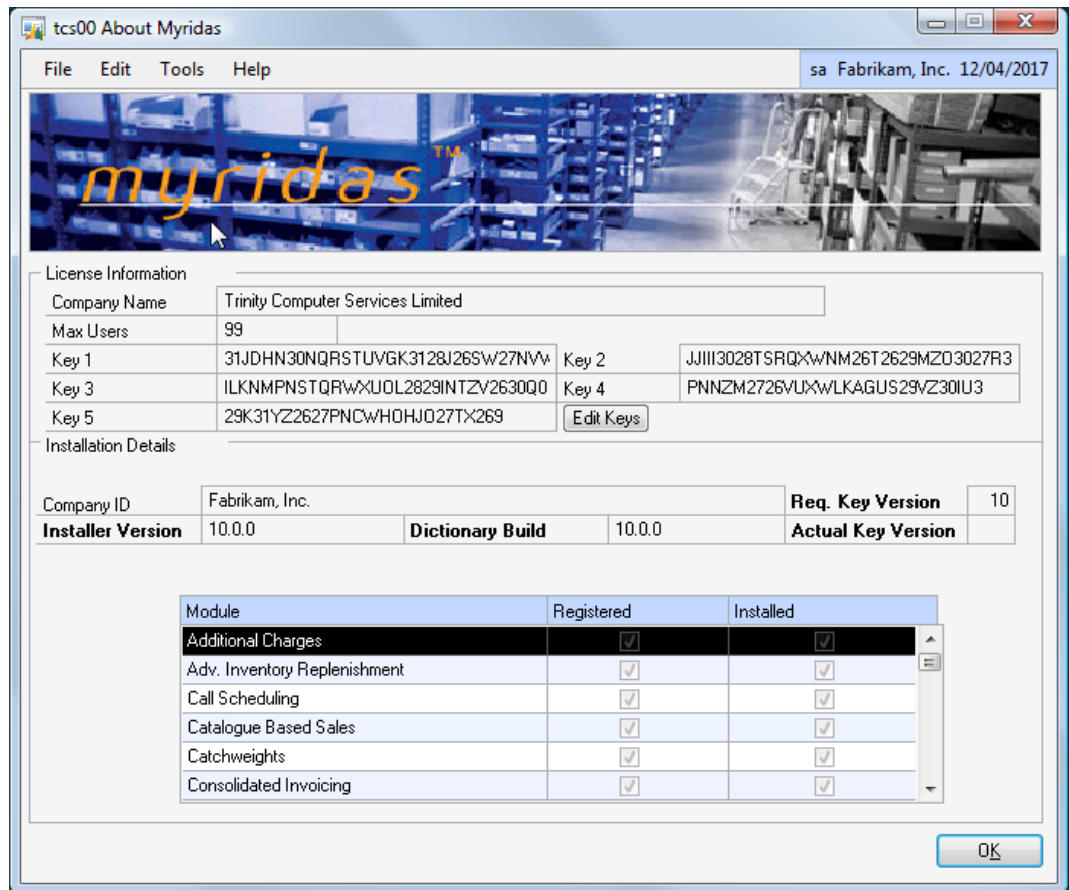


*Tools >> Setup >> Myridas >> About Myridas*

*Help >> About Microsoft Dynamics GP >> Additional >> About Myridas*

Use the About Myridas window to check your registration information and installation details. The window will tell you which Myridas modules you are registered to use and which have been installed on your system.

*The About Myridas window*



## Item Life Cycle

The Myridas Item Life Cycle module allows for specific statuses to be set up and assigned to stock items. These statuses represent the stages in the Item Life Cycle, for example, an item may be assigned the status of “Under Development” or “Obsolete”.

The main features of the Item Life Cycle module are:

- The facility to maintain specific stock item statuses with descriptions and attributes
- The facility to assign a status to an item or range of items
- The prevention of selling items where there is insufficient stock or where items have been assigned “Do Not Sell” status
- The prevention of purchasing items where they have been assigned “Do Not Purchase” status

The Myridas Item Life Cycle module is fully integrated into Microsoft Dynamics™ GP, giving additional functionality to standard Microsoft Dynamics™ GP Item Maintenance, Sales and Purchasing applications. The user is given the option to assign statuses to an item at different stages in its life cycle, and so control which processes are allowed at each stage.

### *Status Codes*

Different statuses assigned to an item can have effects on several transaction types, for example Sales Orders, so that certain transactions will not be permitted dependant upon the attributes assigned to an item. Use the [Status Code Maintenance window](#) to create and maintain item Status Codes.

Status Attribute	Effects On
“Do Not Sell”	Sales Transaction Entry window
“Sell Only When In Stock”	Sales Transaction Entry window
“Do Not Purchase”	Purchase Transaction Entry window
"Do Not Include In Item Lookup"	Items window

Items that have not been assigned a status under the Item Life Cycle module will be subject to standard Microsoft Dynamics™ GP behaviour.

## 1. Status Code Maintenance Window



*Cards >> Myridas >> Item Life Cycle >> Status Code Maint*

Use the Status Code Maintenance window to:

- Create or edit a Status Code
- Enquire about a specific Status Code

*The Status Code Maintenance window*

### 1.1 Creating and Editing Status Codes

An item Status Code has variable attributes and may be used to control the permitted activities for a specified item or items.

**To create or edit an item Status Code in the Status Code Maintenance window:**

1. Enter a Status Code ID or click the lookup to select one from the Status Code Lookup window. If you select an existing Status Code, its description and attributes will be displayed in the window.
2. For new Status Codes enter a Status Code description.
3. Confirm any attributes that shall be required by the Status Code by clicking on the relevant check boxes.

The “Do Not Sell” and “Sell Only When In Stock” attributes are mutually exclusive and may not be selected for the same item/items.

If you click the "Do Not Include In Item Lookup" option then the selected Item Number will not be visible when using the Items window.

4. Click the Save button.

*Deleting a Status Code*

Click the Delete button to delete a status code. You will not be able to delete a Status Code if there are current items assigned to that Status Code.

## 2. Item Status Code Allocation Window



*Cards >> Myridas >> Item Life Cycle >> Assign Status Range*

Use the Item Status Code Allocation Window to:

- Assign Status Codes to multiple items

*The Item Status Code Allocation window*

Item Number	Description
Generic Description	Class Code
BELL100	Phone Bellissimo
HA100G	Green Hand Assembly
HDWR-PRO-4866	Pro processor 4D
KPA100	Keypad Assembly
SCAN100F	Scanner
TRANS100	Transistor

### 2.1 Allocating Status Codes to Multiple Items

**To assign items to a Status Code in the Item Status Code Allocation window:**

1. Enter the required Status Code ID or click the lookup to select one from the Status Code Lookup window. The Status Code description and attributes will be displayed, and any items already assigned to this Status Code will be displayed in the scrolling window.
2. For each item to be assigned to the Status Code enter an Item Number in the scrolling window or click the lookup to select one from the Items window.

Items will be added to the Status Code in the order in which you select them. Click the Sort button to sort items by item number (optional).

3. Click the Save button to save the changes to your Status Code

Click the Ranges button to open the [Item Status Code Allocation Ranges window](#) where ranges of items can be assigned to a Status Code.

*Deleting Status Code allocations*

Click the Delete button to de-allocate any items that have been assigned to a Status Code.

### 3. Item Status Code Allocation Ranges Window



*Item Status Code Allocation window>> Click the Ranges button*

Use the Item Status Code Allocation Ranges window to:

- Assign ranges of items to a Status Code

*The Item Status Code Allocation Range window*

Item Number	Generic Desc	Class ID	Item Description	Status Code	Status Description
BELL100			Phone Bellisimo		
HA100G			Green Hand Assembly		
HDWR-PRO-4866			Pro processor 4D		
KPA100			Keypad Assembly		
SCAN100F			Scanner		
TRANS100			Transistor		

### 3.1 Assigning Ranges of Items to a Status Code

#### To assign a range of items to a Status Code in the Item Status Code Allocation Ranges window:

1. Click All to assign all records or From to assign a selection of records for Item Number, Generic Description and Class ID. If you select From, enter To and From values to specify a range, or use the lookups.
2. To specify items to be added to the Status Code:
  - 2.1. Select the Unassigned check box to add unassigned items only to the Status Code.

Note that items previously assigned to different Status Codes will not be reassigned to the new Status Code.

- 2.2. Select the Any check box to add items previously assigned to any Status Code, or unassigned items, to the new Status Code.

- 2.3. Select the Specified check box to add items previously assigned to a specified Status Code. Enter the required Status Code ID or click the lookup to select one from the Status Code Lookup window.



3. Click the Preview button to verify your selection in the scrolling window. The item number and item description of each item to be assigned will be listed. Click the Show button to display the generic description, class ID, current Status Code and Status Code description (where relevant).
4. Click the Transfer button to assign your item selection to the Status Code. Click OK to close the Transfer Completed Successfully dialog box.
5. Click OK to return to the Item Status Code Allocation window.

## 4. Assign Status Code to Item Number Window



*Cards >> Myridas >> Item Life Cycle >> Assign Status Indiv*

Use the Assign Status Code to Item Number window to:

- Assign Status Codes to single items.

*The Assign Status Code to Item Number window*

### 4.1 Assigning a Status Code to an Individual Item

Status codes can also be assigned to an item via the Additional option in Item Maintenance.

#### **To assign Status Codes to single items in the Assign Status Code to Item Number window:**

1. Enter the required Item Number ID or click the lookup to select one from the Item Number Lookup window.
2. Where the item has already been assigned a Status Code this code will be displayed in the window, with any allocated attributes.
3. To add a Status Code to an item, or amend a current item Status Code, either enter the required Status Code ID or click the lookup to select one from the Item Number Lookup window.
4. Click the Save button.

*Deleting Status Code Allocations*

Click the Delete button to de-allocate an item that has been assigned to a Status Code

Note that a record cannot be saved without a valid status.



## 5.1 “Do Not Sell” Items



If an item is selected in the Sales Transaction Entry window that has been allocated a Status Code incorporating the attribute “Do Not Sell”, then a warning will be displayed with the item’s status description and the message “Item not available for sale”.

*The Item not available for sale warning*



Note that you will not be allowed to continue with this transaction line in the Sales Transaction Entry window. This applies to all transaction types with the exception of returns.

## 5.2 “Sell Only When In Stock” Items – Sales Orders, Invoices and Back Orders



An item may be entered into the Sales Transaction Entry window where the quantity required is greater than the quantity available. If that item has been allocated a Status Code incorporating the attribute “Sell Only When In Stock”, then a warning will be displayed with the item’s status description and the message “Insufficient stock for this sale”.

*The Insufficient stock for this sale warning*



Note that you will not be allowed to continue with this transaction line in the Sales Transaction Entry window. This applies to sales orders and invoices where the document type ID is set to allocate by line item.

Where the document type ID for a sales order or invoice is **not** set to allocate by line item, then a similar warning will be given, but with the option to continue with the sales order/invoice, regardless of the stock balance.

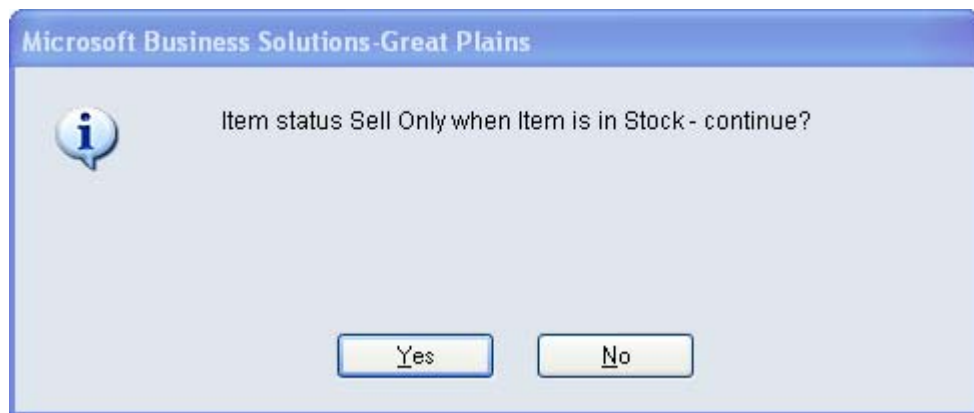
When a “back order” document is entered, then the “Item not available for sale” warning will be raised, regardless of the stock balance.

### 5.3 “Sell Only When In Stock” Items – Quotations



An item may be entered into the Sales Transaction Entry window that has been allocated a status with the attribute, “Sell Only When In Stock”. Should an item with this attribute be entered into a quotation, then a warning will be displayed with the item status description and the message “Item status”.

*The Item status warning*

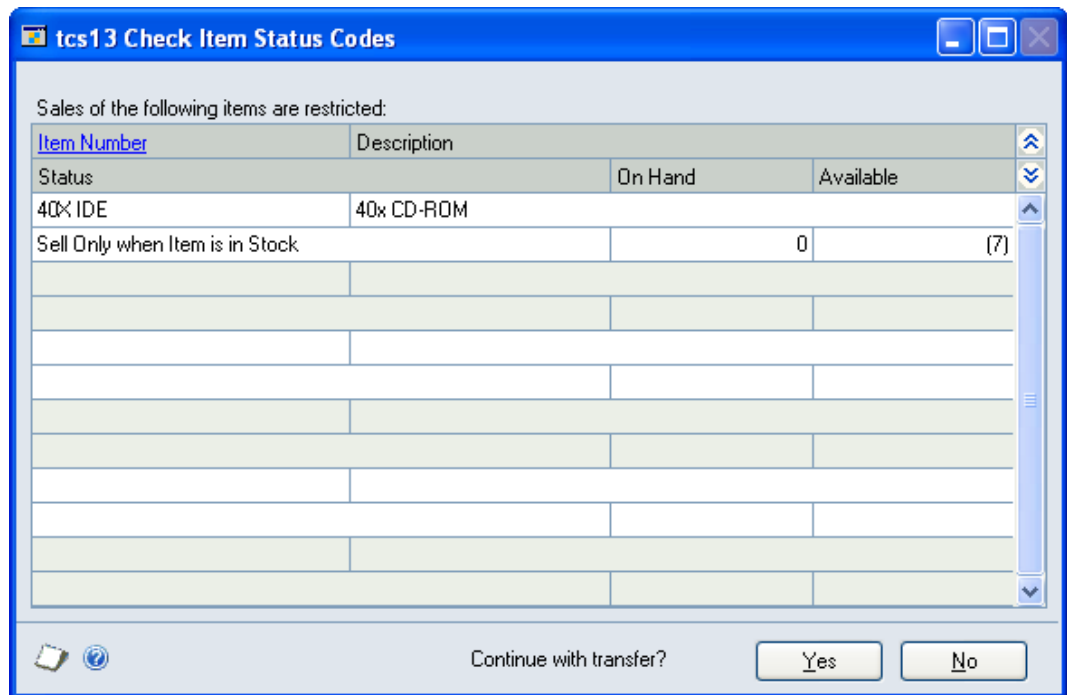


Note that the option will be given to continue with the quotation.

## 5.4 Transferring Quotations to Sales Orders/Invoices

A standard feature of Microsoft Dynamics™ GP allows you to transfer a quotation document to a sales order or an invoice. If you are using the Item Life Cycle module, then should you select any items to which the status attributes “Do Not Sell” or “Sell Only When In Stock” have been allocated, a scrolling window will be displayed with the message “Check Item Status Codes”.

*The Check Item Status Codes window*



This window will contain the message “Sales of the following items are restricted”. All relevant item numbers will be listed in the scrolling window below, along with their item description, status description, on-hand quantity and available stock.

### To continue with the transfer:

1. Click the Yes button.

Note that if you select to continue with the transfer then all items on the transfer, including those with “Do Not Sell” and “Sell Only When In Stock” attributes”, will be transferred.

Clicking the No button will stop the transfer.

## 6. Purchase Transactions – Item Life Cycle Version



*Transactions >> Purchasing >> Purchase Order Entry*

Use the Purchase Order Entry window:

- To enter details of purchase orders.

The Microsoft Dynamics™ GP Purchase Transaction Entry window has been enhanced for the Item Life Cycle module to account for item Status Code upon entry of purchase transactions.

*The Purchase  
Order Entry  
window*

**Purchase Order Entry**

Save Delete Void Blanket Copy

Type: Standard  Hold  
 PO Number: PO2074  
 Buyer ID:   
 Date: 05/10/2004  
 Allow Sales Documents Commitments

Creditor ID: ADVANCED0001  
 Name: Advanced Office Systems  
 Currency ID: Z-US\$

Line	Creditor Item	U of M	Quantity Ordered	Unit Cost
1	COV100G	Each	5	\$1.00
	Green Cover	WAREHOUSE	0	\$5.00
0			0.00	\$0.00
			0.00	\$0.00

Remaining PO Subtotal: \$5.00

Company Tax Sched: COMPANYPUR

Comment ID:   
 Subtotal: \$5.00  
 Trade Discount: \$0.00  
 Freight: \$0.00  
 Miscellaneous: \$0.00  
 Tax: \$0.00  
 Total: \$5.00

PO Number: PO2074 PO Status: New Revision: 0

## 6.1. "Purchase Not Allowed"



If an item is selected in the Purchase Order Entry that has been allocated a Status Code with the attribute "Do Not Purchase", then a warning will be displayed with the item status description and the message "Purchase not allowed".

*The Purchase  
not allowed  
warning*



You will not be allowed to continue with the purchase of this item.

## 6.2 Purchase Order Generation with the Item Life Cycle Module

Use the Purchase button in the Sales Transaction Entry window or Sales Document Range Enquiry window:

- To generate purchase orders automatically

The Microsoft Dynamics™ GP auto-generation of purchase orders has been given added functionality by the Item Life Cycle module to check for items with a “Do Not Purchase” status attribute before the purchase order is generated.

Note that if you select the Purchase Order Generator through the Transactions >> Purchasing menu then items restricted from purchase will automatically be repressed.

### To check item status through this function:

1. Click the Generate button on the Purchase Order Preview window.

If any items with the status description “Do Not Purchase” are included in the order, then the Check Purchase Item Status Codes window will be displayed. Any items with the “Do Not Purchase” status attributed to them will be displayed in the scrolling window below.

2. Purchasing of these items is restricted. Clicking the Yes option will generate the purchase order for all items on that order, including those with the status attribute, “Do Not Purchase”.

Clicking the No button will return you to the Purchase Order Preview window. You may then edit the purchase order details and/or remove items from the purchase order.

*The Check  
Purchase Item  
Status Codes  
window*

Item Number	Description	Status	On Hand	Available
128 SDRAM	128 meg SDRAM	Do not buy	654.00	(10,899.00)

Proceed with the Purchase Order Generation ?

Yes No

## 7. Items Window – Item Life Cycle Version



*Cards >> Inventory >> Item Maintenance window >> Click the Item Number lookup button*

Use the Items window to:

- View, edit or select items

The Microsoft Dynamics™ GP Items window has been enhanced for the Item Life Cycle module to include the field Status Code. This extra information may be useful during sales transaction entry, for example.

There is also the additional option to Only Show Items whose Status Code is set NOT to show in the Item Lookup. In the Status Code Maintenance window you had the option to set items to not show on the Items window. These items will not currently be displayed. If you click select the new option on the Items window then only items that you have set not to display will be displayed.

*The Items window*

Item Number	Short Description	Status Code	Qty. On Hand	Qty. Avail.	PO Quantity
100XLB	phone		0	0	0
Black Phone					Each
100XLG	Phone		20	3	0
Green Phone					Each
100XLR	phone		0	0	0
Red Phone					Each
100XLY	phone		0	0	0
Yellow Phone					Each
128 SDRAM	RAM		51657	51647	0
128 meg SDRAM					Each

Only show Items whose Status Code is set NOT to show in the Item Lookup



Select Cancel

Note that additional functionality is available in the Items window through other Myridas modules.

## Appendix A

### Access to Myridas Windows

#### Item Life Cycle

<b>Window Name</b>	 <b>Menu Access</b>	 <b>Other Access</b>
Status Code Maintenance	Cards >> Myridas Cards >> Item Life Cycle >> Status Code Maint.	Cards >> Inventory >> Item >> Click Item Number Lookup >> Items window >> Click Status Code
Item Status Code Allocation	Cards >> Myridas Cards >> Item Life Cycle >> Assign Status Range	
Item Status Code Allocation Ranges	Item Status Code Allocation window >> Ranges button	
Assign Status Code to Item Number	Cards >> Myridas Cards >> Item Life Cycle >> Assign Status Individ.	Item Maintenance window >> Additional >> Assign Status Code
Check Purchase Item Status Codes	Transactions >> Sales >> Sales Transaction Entry >> Purchase Order Preview >> Generate	

## Appendix B

### Alternate Microsoft Dynamics™ GP Windows

Some Microsoft Dynamics™ GP windows have been modified to incorporate Myridas behaviour:

<b>Window Name</b>	<b>Series</b>	<b>Myridas Module</b>	<b>Modification</b>
Items	Inventory	Item Life Cycle	Status Code field  Option to Only show Items whose Status Code is set Not to show in the Item Lookup

## Index

### **A**

Assigning	
items to a Status Code .....	7
Ranges of Items to a Status Code .....	9
Status Code to Individual Item .....	10
Status Code to Item Number .....	10

### **C**

Check purchase item status codes .....	17
Check Purchase Item Status Codes	
window .....	17
Creating	
status codes .....	6

### **D**

Deleting	
status code allocations .....	8
status codes .....	6
status codes allocations .....	10
Do Not Sell Items .....	12

### **I**

Item Life Cycle .....	5
Items window	
Item Life Cycle Version .....	18

### **P**

Purchase Not Allowed .....	16
Purchase Order Generation	
Item Life Cycle Module .....	17
Purchase Transactions	
– Item Life Cycle Version .....	15

### **S**

Sales Transaction Entry window	
Item Life Cycle Version .....	11
Sell Only When In Stock Items	
Quotations .....	13
Sales .....	12
Status Code Maintenance Window .....	6
Status Codes	
deleting .....	6